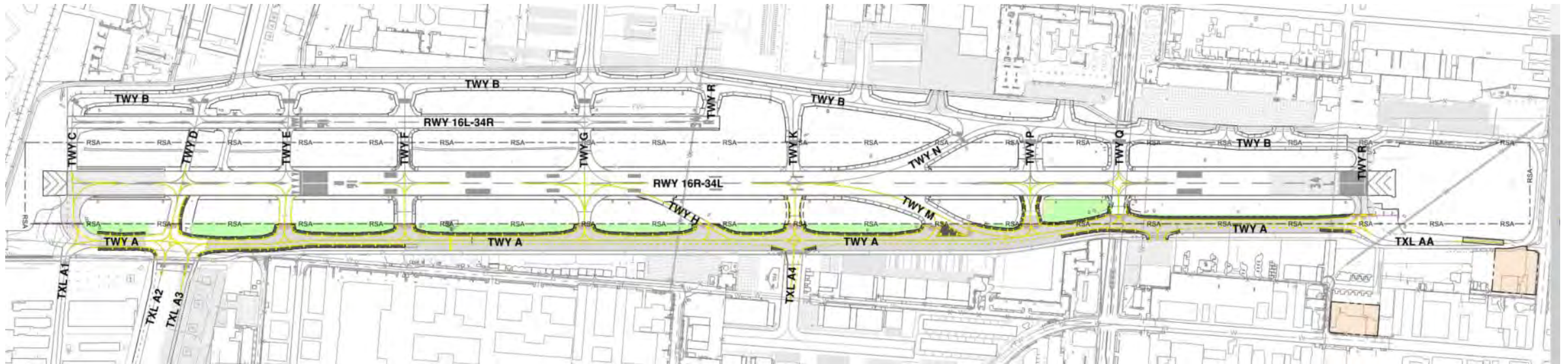




# TAXIWAY A REHABILITATION – PHASE II

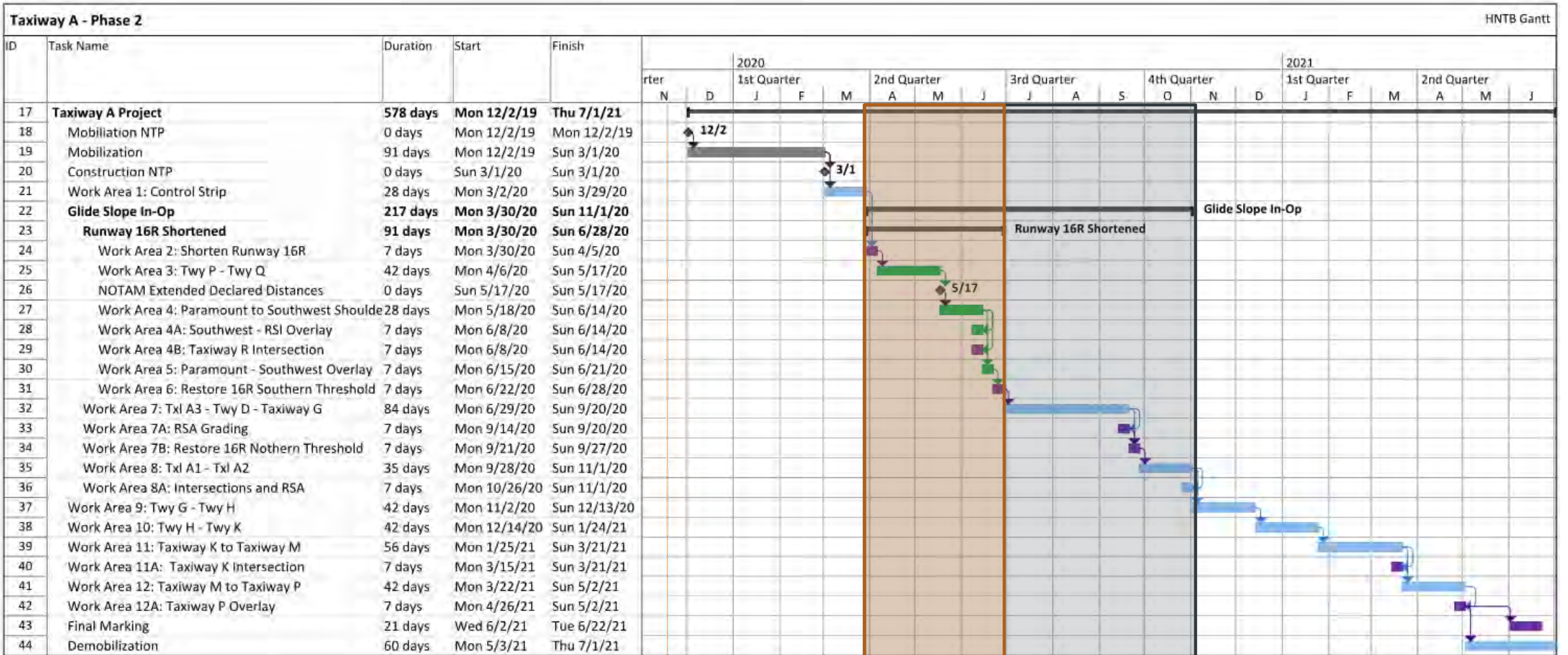
VAN NUYS AIRPORT – LOS ANGELES WORLD AIRPORTS

# CURRENT PROJECT SCOPE



- Project Limits: Taxiway A from Taxiway C to Taxi Lane AA
- FAA ADG III Taxiway Geometry
- Full Depth Taxiway Pavement Reconstruction, 20 year design life
- Infield Grading and Drainage Improvements
- LED Centerline and Edge Lights
- Airfield Signage Upgrades
- Airfield Surface Marking

# CONSTRUCTION SCHEDULE

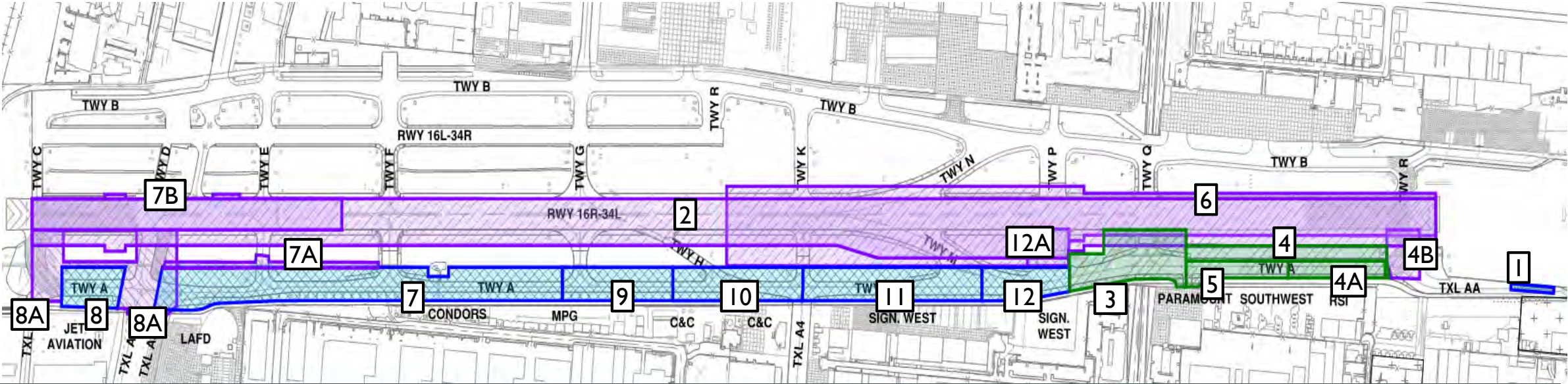


**Unrestricted Daytime Work Area**  
(Minimum 8-Hour Shift, 5 Days/Week)

**Nighttime Work Area**  
(2200-0600)

**Accelerated Work Area**  
(Minimum 10-Hour Shift, 6 Days/Week)

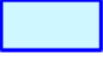



**Already Constructed Work Area**

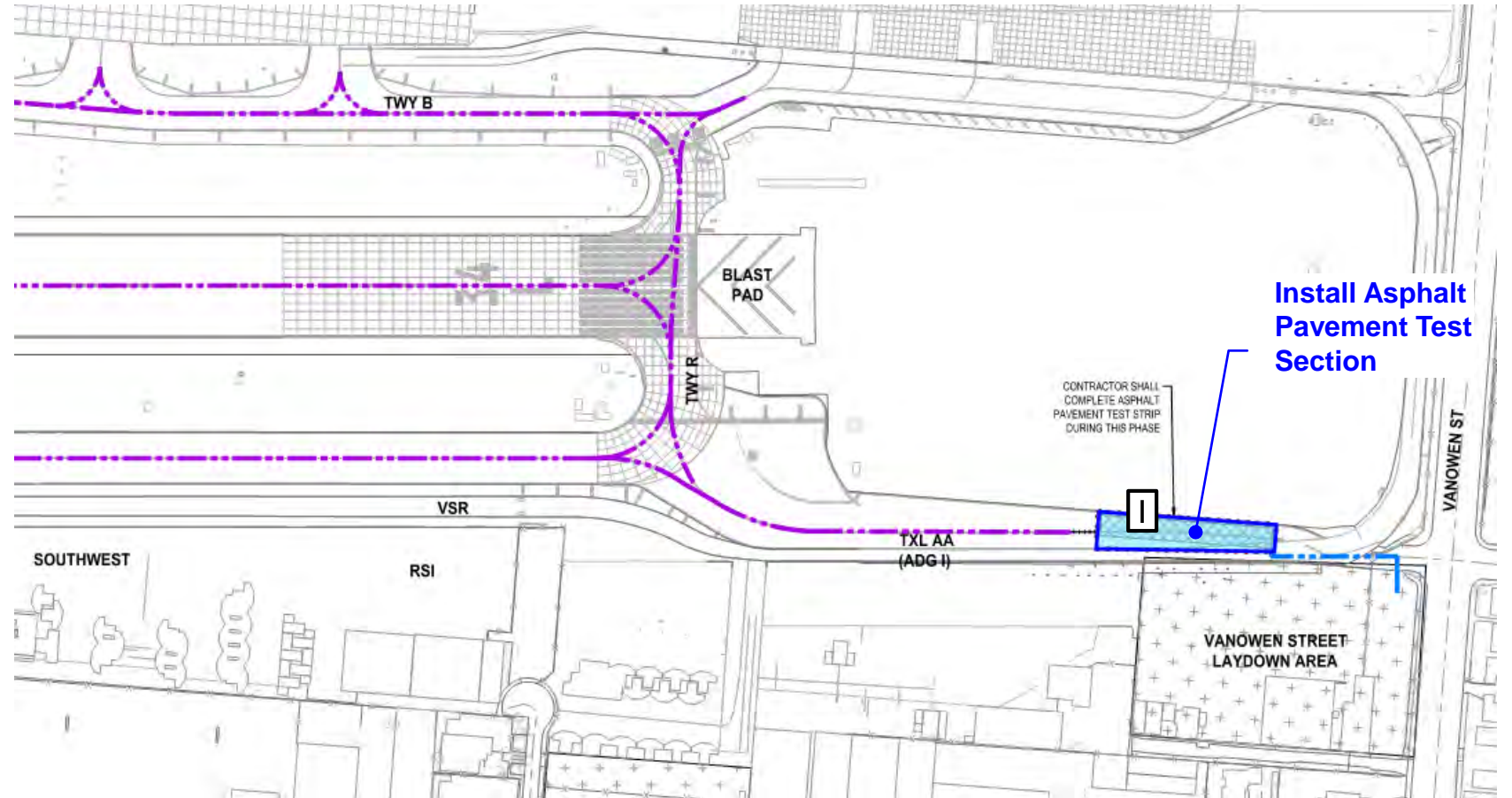


# OVERALL PHASING PLAN

## Work Area I

- Early March through End of March
  - 28 Days (4 Weeks)
- Control strip along Taxilane AA


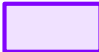


-  **Unrestricted Daytime Work Area**  
(Minimum 8-Hour Shift, 5 Days/Week)
-  **Accelerated Work Area**  
(Minimum 10-Hour Shift, 6 Days/Week)
-  **Nighttime Work Area**  
(2200-0600)
-  **Already Constructed Work Area**

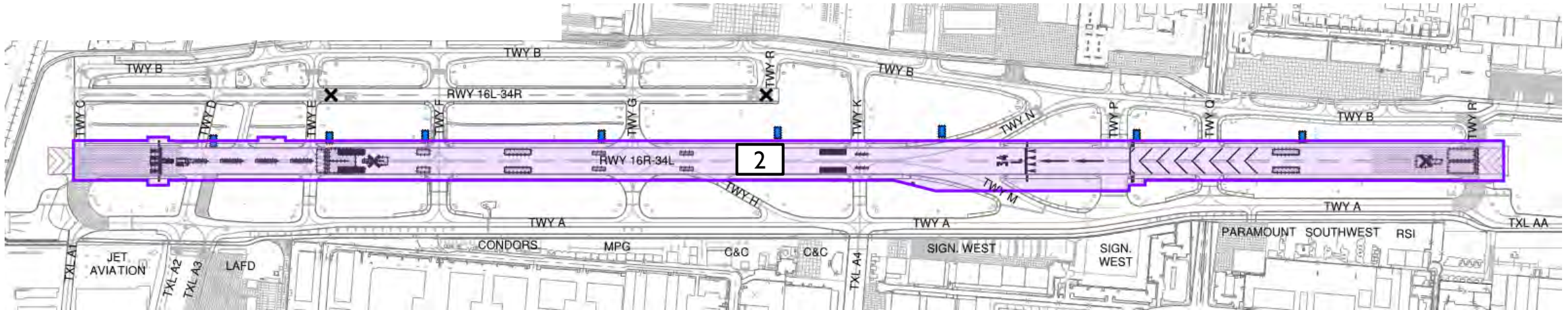


## WORK AREA I

## Work Area 2

- Early April
  - 7 Nights (1 week)
- Black out existing 16R/34L marking and install temporary marking

-  **Unrestricted Daytime Work Area**  
(Minimum 8-Hour Shift, 5 Days/Week)
-  **Nighttime Work Area**  
(2200-0600)
-  **Accelerated Work Area**  
(Minimum 10-Hour Shift, 6 Days/Week)
-  **Already Constructed Work Area**



## WORK AREA 2

## Work Area 2

Install Temporary  
PLASI

Temporary Markings  
Reflecting Shortened  
Runway Configuration

Temporary  
Displaced Threshold

Temporary Runway  
End Lights

Marking Removal  
(Chevrons Installed)

Existing Displaced  
Threshold Shifted North

Install Temporary  
PLASI

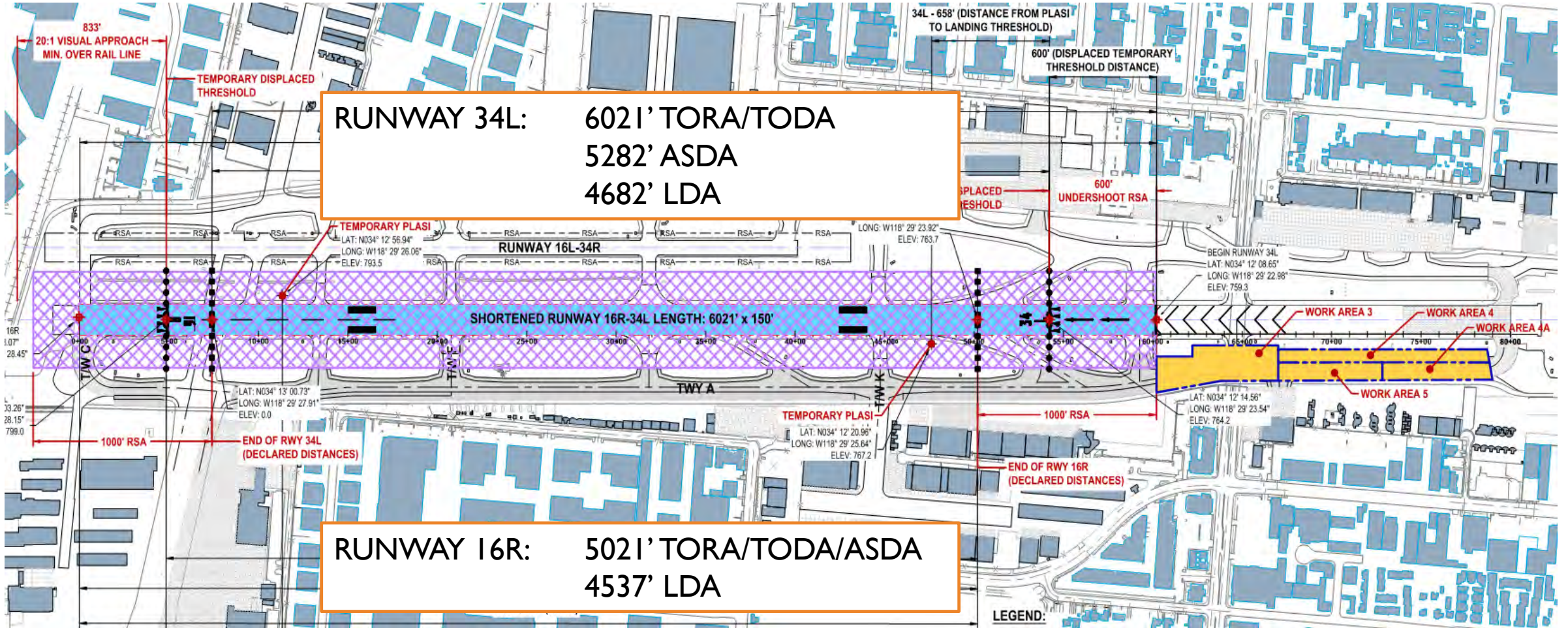
Temporary  
Threshold Lights

Operational Runway

Closed Section  
of Runway

## WORK AREA 2

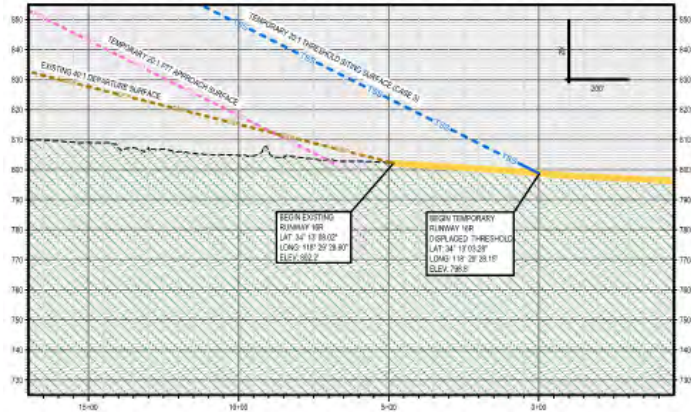
# PROPOSED RUNWAY 16R – CONFIGURATION I



**RUNWAY 16R:** 5021' TORA/TODA/ASDA  
4537' LDA



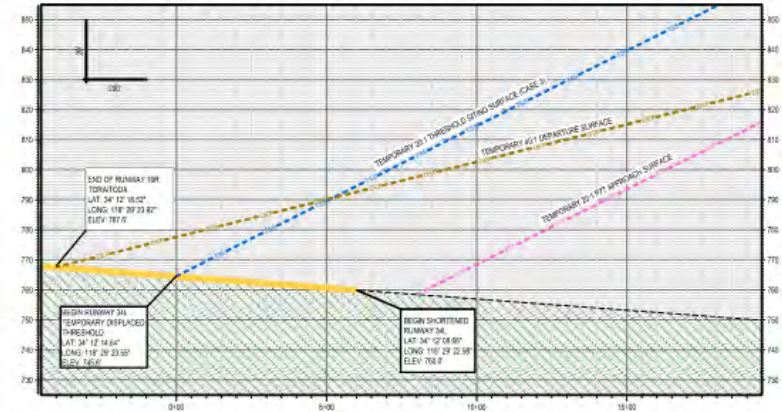
TEMP. SHORTENED RUNWAY 16R PROFILE VIEW



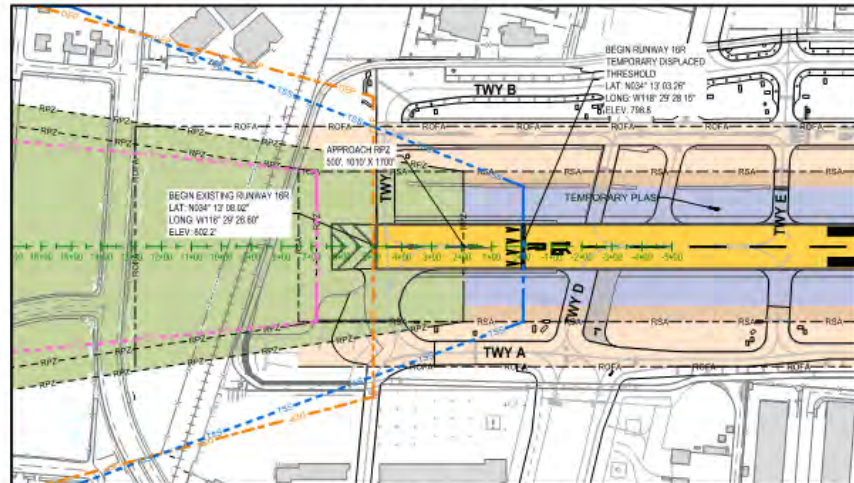
DRAWING LEGEND	
RUNWAY PAVEMENT	[Symbol]
TAXIWAY / APRON PAVEMENT	[Symbol]
AIRPORT PROPERTY LINE	[Symbol]
RUNWAY SAFETY AREA	[Symbol]
RUNWAY PROTECTION ZONE	[Symbol]
RUNWAY OBSTACLE FREE AREA	[Symbol]
RUNWAY OBSTACLE FREE ZONE	[Symbol]
BUILDING - EXISTING	[Symbol]
DEPARTURE SURFACE - EXISTING	[Symbol]
DEPARTURE SURFACE - NEW	[Symbol]
THRESHOLD SITING SURFACE (TSS)	[Symbol]
PARALLEL APPROACH SURFACE (PAS)	[Symbol]
PARALLEL APPROACH SURFACE (PPT)	[Symbol]
TSS AND PPT CONTOURIAL IN PROFILE	[Symbol]
EXTENDED RUNWAY CENTERLINE	[Symbol]
WORK AREA NUMBER AND CONSTRUCTION AREA, SEE CONSTRUCTION SEQUENCING PLANS	[Symbol]

NOTE: PRELIMINARY, NOT FOR CONSTRUCTION

TEMP. SHORTENED RUNWAY 34L PROFILE VIEW

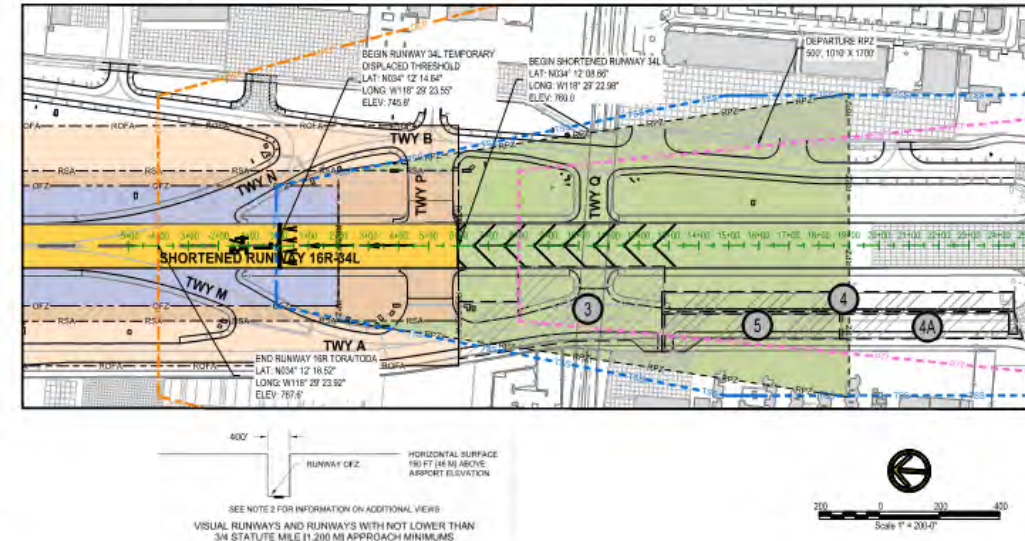


TEMP. SHORTENED RUNWAY 16R PLAN VIEW



**NOTE: RUNWAY APPROACH AND DEPARTURE SURFACES IAW TABLE 3-2, EB-99**

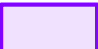
TEMP. SHORTENED RUNWAY 34L PLAN VIEW




## Work Area 3

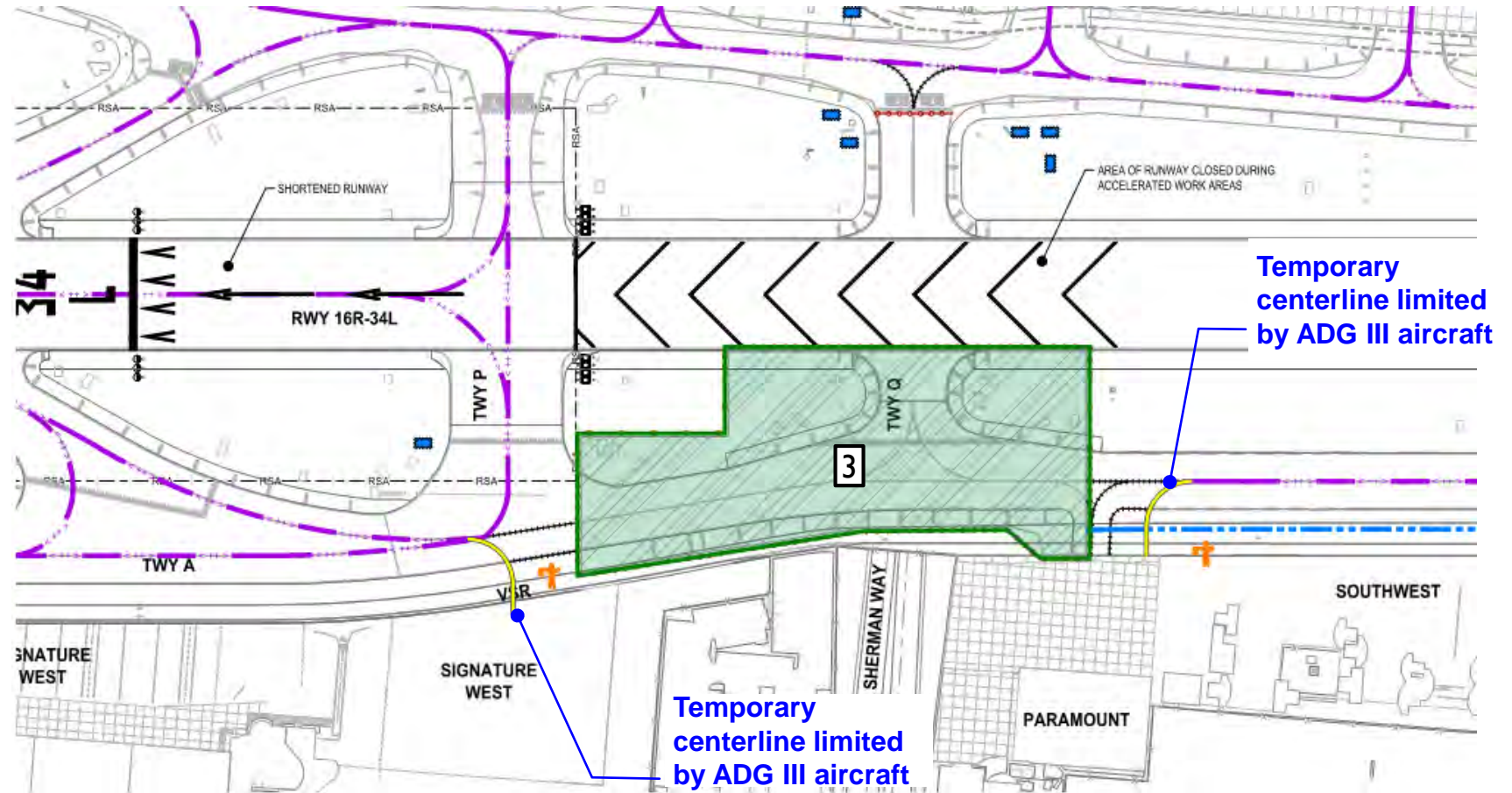
- Early April through Mid May
  - 42 Days (6 Weeks)
- Runway 16R Shortened
- ILS Non-Operational
- Temporary centerlines installed for Signature West and Paramount

 **Unrestricted Daytime Work Area**  
(Minimum 8-Hour Shift, 5 Days/Week)

 **Nighttime Work Area**  
(2200-0600)

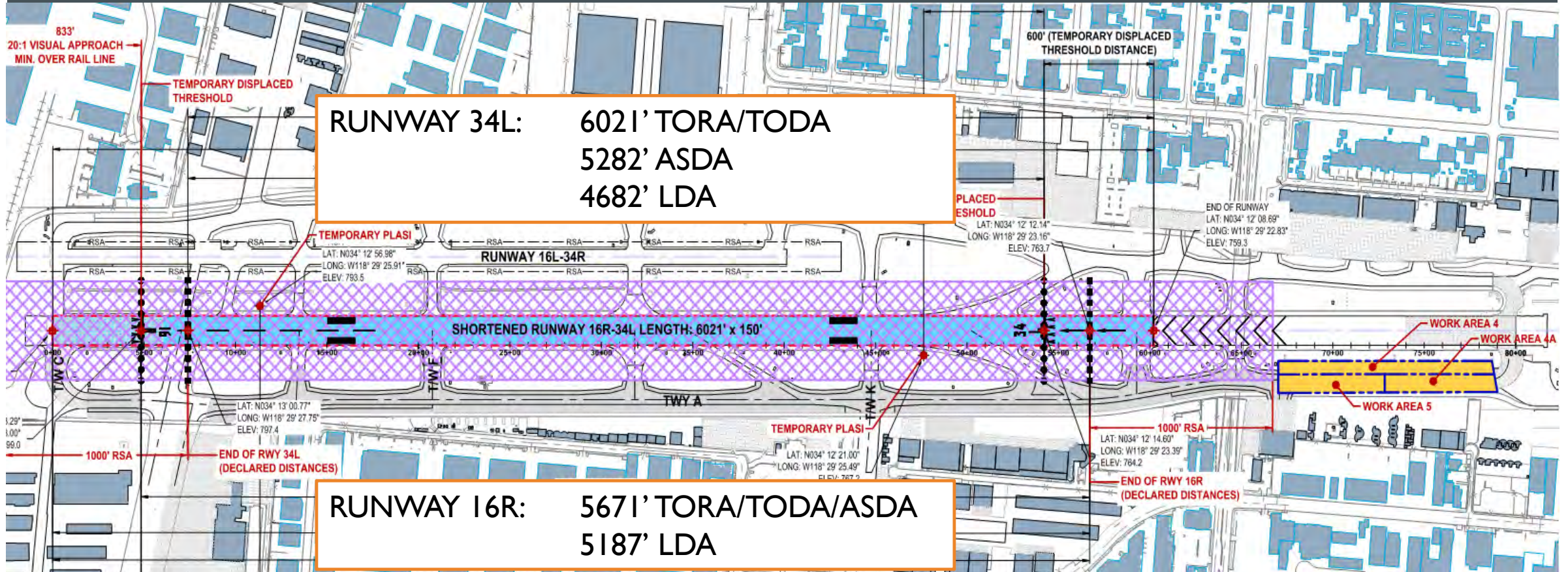
 **Accelerated Work Area**  
(Minimum 10-Hour Shift, 6 Days/Week)

 **Already Constructed Work Area**

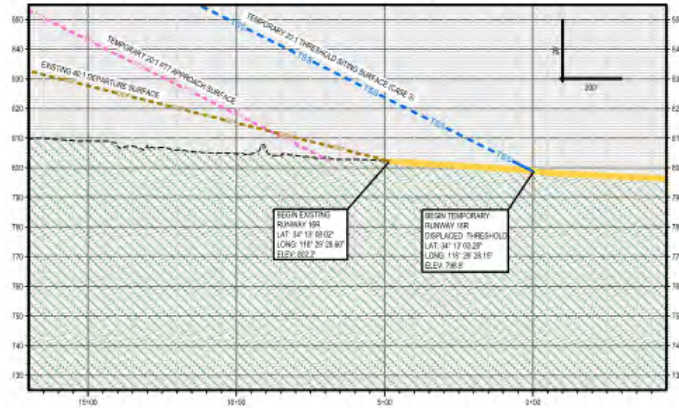


## WORK AREA 3

# PROPOSED RUNWAY 16R – CONFIGURATION 2

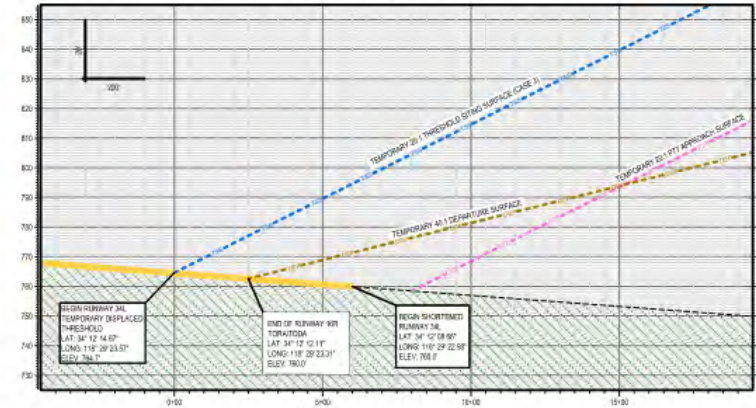


TEMP. SHORTENED RUNWAY 16R PROFILE VIEW

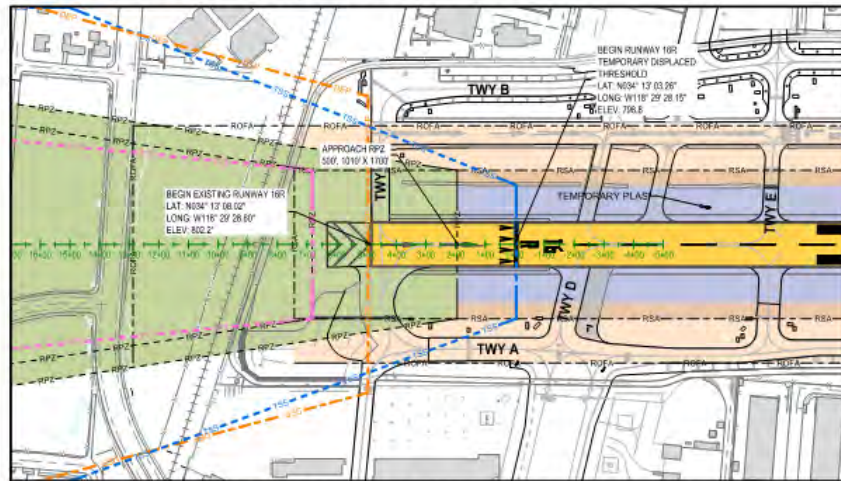


DRAWING LEGEND	
RUNWAY PAVEMENT	[Symbol]
TAXIWAY / APRON PAVEMENT	[Symbol]
ADJACENT PROPERTY LINE	[Symbol]
RUNWAY SAFETY AREA	[Symbol]
RUNWAY PROTECTION ZONE	[Symbol]
RUNWAY OBJECT FREE AREA	[Symbol]
RUNWAY OBSTACLE FREE ZONE	[Symbol]
TRAILING / EXISTING	[Symbol]
DEPARTURE SURFACE - EXISTING	[Symbol]
DEZ - EXISTING UNDER APPROACH	[Symbol]
THRESHOLD STRIP SURFACE (TSS)	[Symbol]
PART 77 APPROACH SURFACE (PTV)	[Symbol]
TSS AND PTV COINCIDENTAL IN PROFILE	[Symbol]
EXTENDED RUNWAY CENTERLINE	[Symbol]
WORK AREA NUMBER AND CONSTRUCTION AREA. SEE CONSTRUCTION SEQUENCING PLAN.	[Symbol]
NOTE: PRELIMINARY. NOT FOR CONSTRUCTION.	

TEMP. SHORTENED RUNWAY 34L PROFILE VIEW

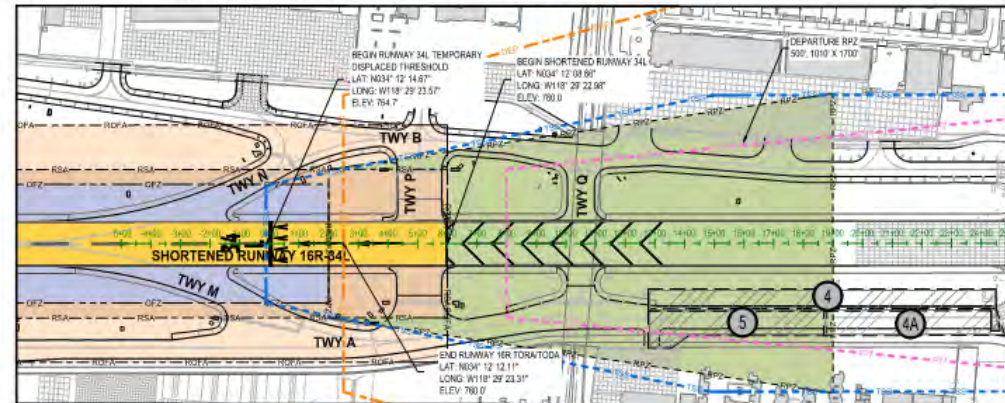


TEMP. SHORTENED RUNWAY 16R PLAN VIEW



NOTE: RUNWAY APPROACH AND DEPARTURE SURFACES IAW TABLE 3-2, EB-99

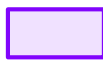
TEMP. SHORTENED RUNWAY 34L PLAN VIEW




## Work Area 4

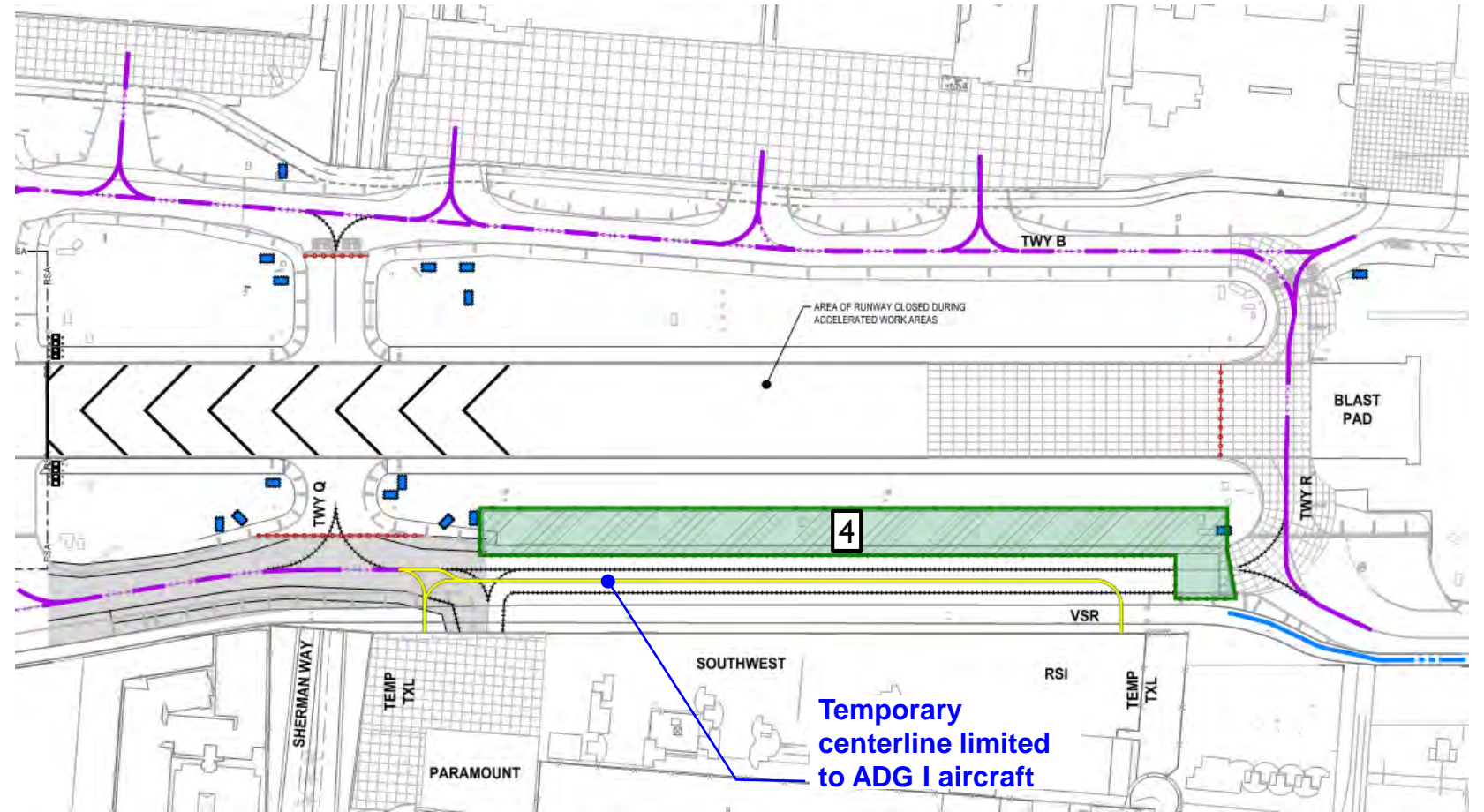
- Mid May to Mid June
  - 28 Days (4 Weeks)
- Runway 34L threshold extended
- RSI & Southwest access limited to ADG I aircraft
- ILS Non-Operational

 **Unrestricted Daytime Work Area**  
(Minimum 8-Hour Shift, 5 Days/Week)

 **Nighttime Work Area**  
(2200-0600)

 **Accelerated Work Area**  
(Minimum 10-Hour Shift, 6 Days/Week)

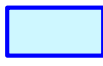
 **Already Constructed Work Area**




## WORK AREA 4

## Work Area 4A & 4B

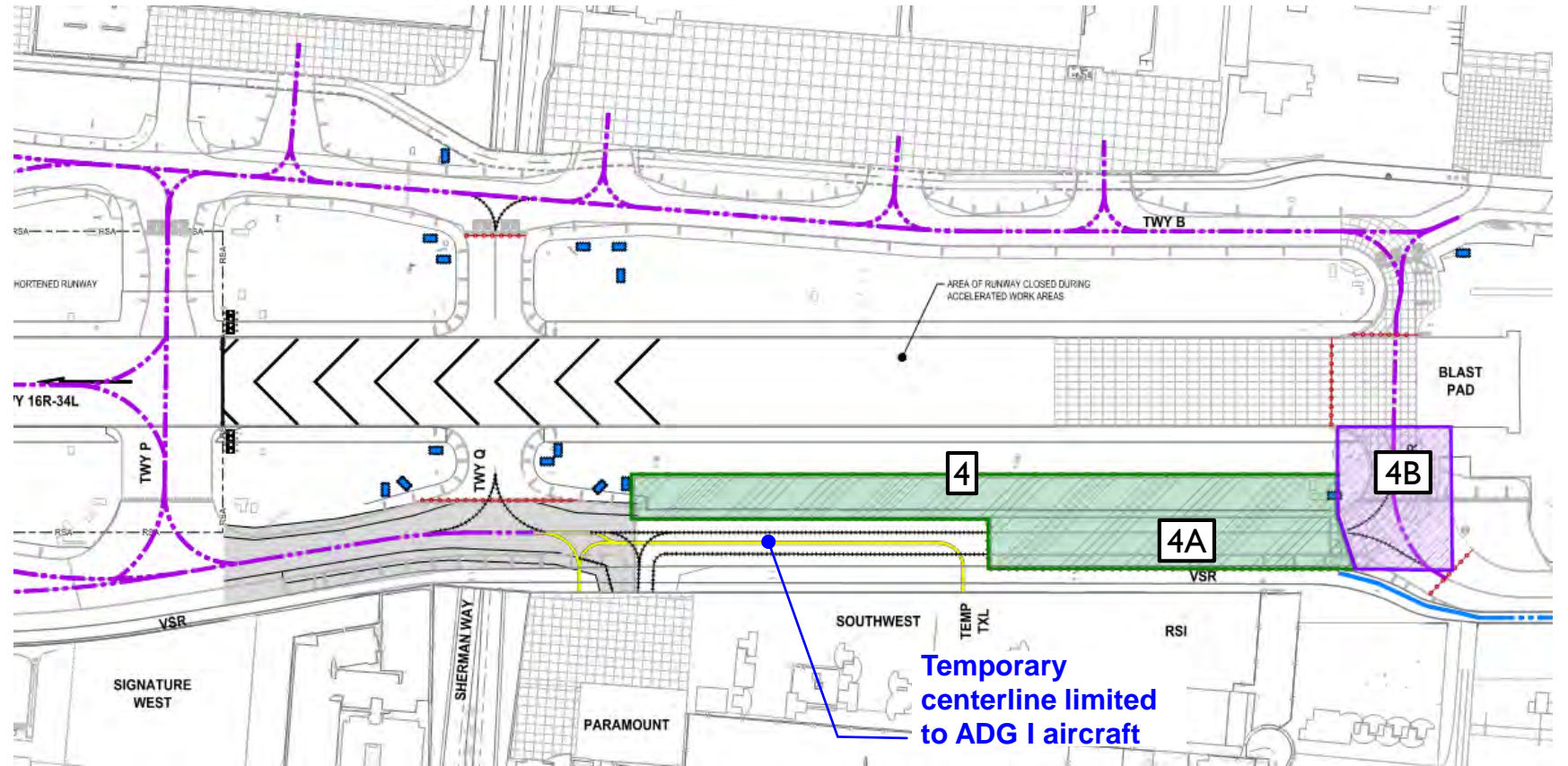
- Early June to Mid June
  - 7 Days/7 Nights (1 week)
- RSI & Southwest access limited to ADG I aircraft
- Temporary nightly closures as part of work area 4B
- ILS Non-Operational

 **Unrestricted Daytime Work Area**  
(Minimum 8-Hour Shift, 5 Days/Week)

 **Nighttime Work Area**  
(2200-0600)

 **Accelerated Work Area**  
(Minimum 10-Hour Shift, 6 Days/Week)


 **Already Constructed Work Area**





## WORK AREA 4A & 4B

## Work Area 5

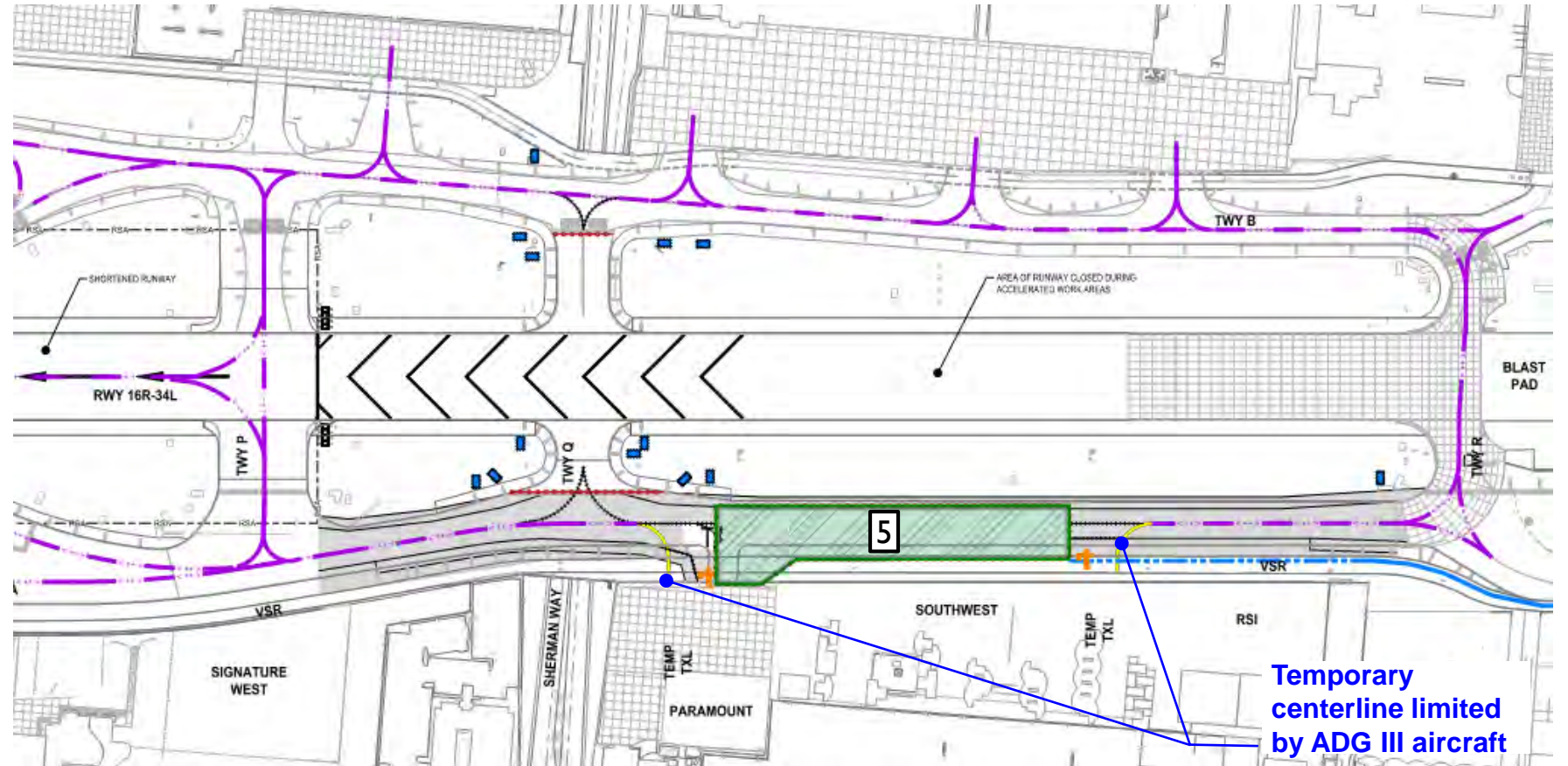
- Mid June to Late June
  - 7 Days (1 week)
- ILS Non-Operational

 **Unrestricted Daytime Work Area**  
(Minimum 8-Hour Shift, 5 Days/Week)

 **Nighttime Work Area**  
(2200-0600)

 **Accelerated Work Area**  
(Minimum 10-Hour Shift, 6 Days/Week)

 **Already Constructed Work Area**




## WORK AREA 5


## Work Area 6

- Late June
  - 7 Nights (1 week)

- Reinstall original 34L runway end markings
- Removal of temporary displaced threshold

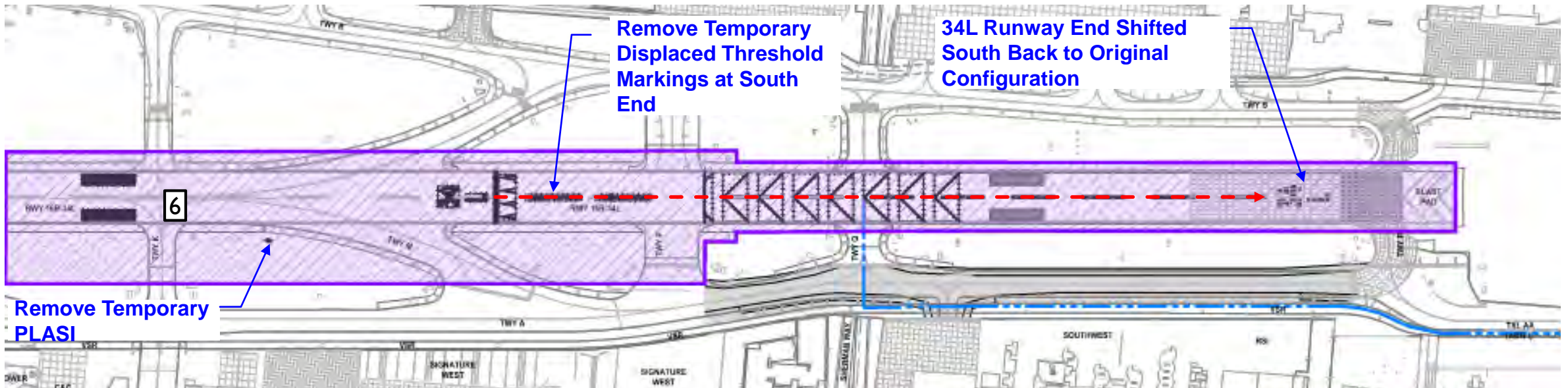
- Removal of temporary electrical and PLASI's

 **Unrestricted Daytime Work Area**  
(Minimum 8-Hour Shift, 5 Days/Week)

 **Nighttime Work Area**  
(2200-0600)

 **Accelerated Work Area**  
(Minimum 10-Hour Shift, 6 Days/Week)

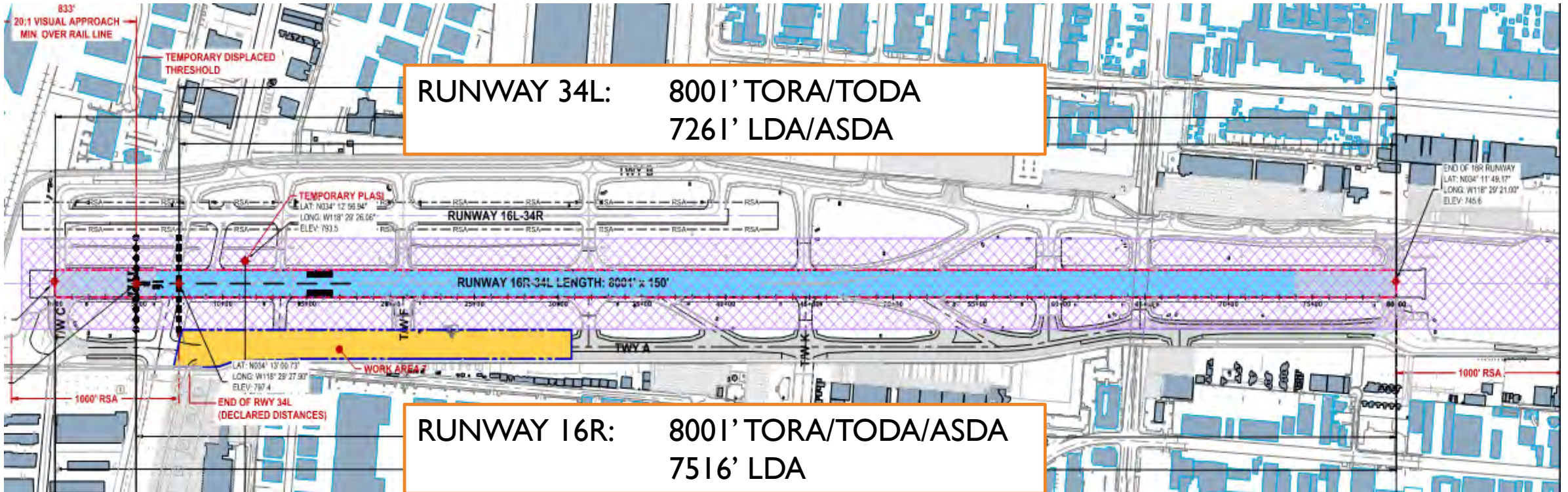
 **Already Constructed Work Area**



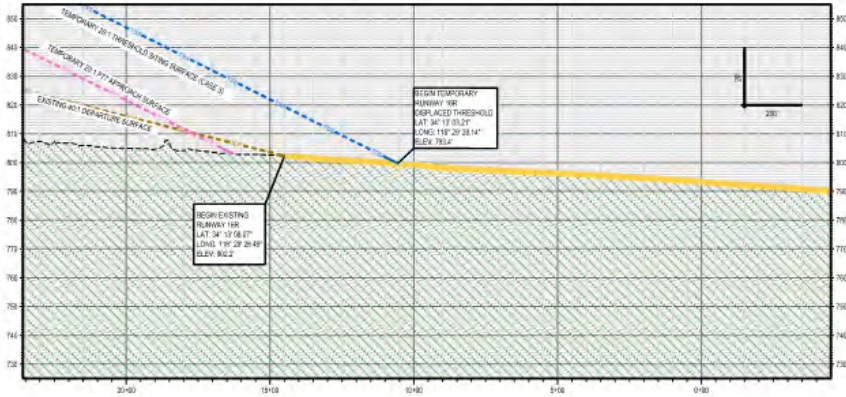
## WORK AREA 6



# PROPOSED RUNWAY 34L/I6R – CONFIGURATION 3

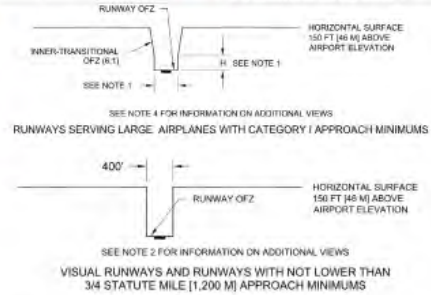


TEMP SHORTENED RUNWAY 16R PROFILE VIEW

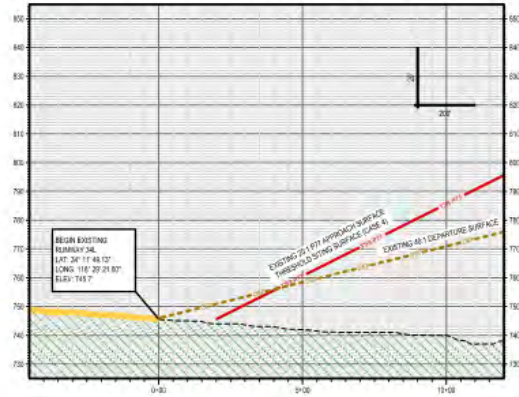


DRAWING LEGEND

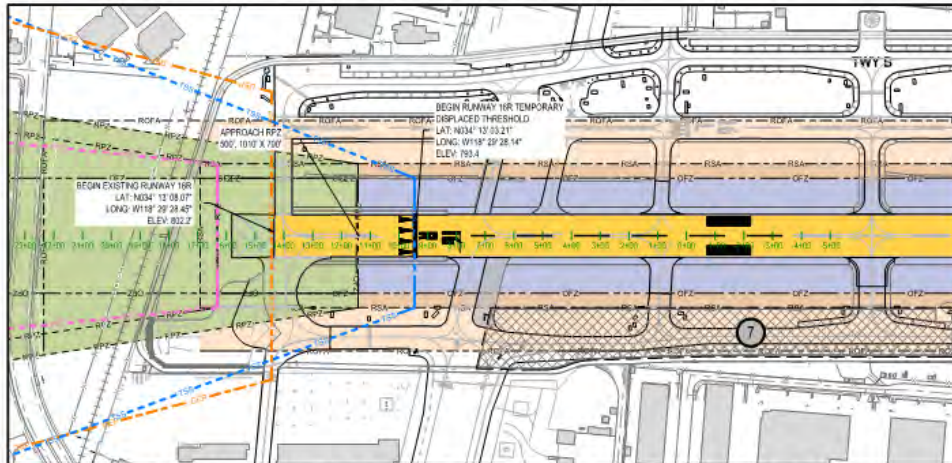
TURKEY PAVEMENT	TS5 AND PTT	TS5 AND PTT
TAXIWAY / APRON PAVEMENT	CONCRETE	CORRELATIONAL RP PROFILE
AIRPORT PROTECTION LINE	DEPARTURE SURFACE (DEP)	DEPARTURE SURFACE (DEP)
RUNWAY SAFETY AREA	OBSTACLE QUALIFICATION SURFACE (OQS)	OBSTACLE QUALIFICATION SURFACE (OQS)
RUNWAY PROTECTION ZONE	EXTENDED RUNWAY CL	EXTENDED RUNWAY CL
RUNWAY OBJECT FREE AREA	APPROXIMATE OBSTACLE FREE ZONE	APPROXIMATE OBSTACLE FREE ZONE
RUNWAY OBSTACLE FREE ZONE	WORK AREA TOLERANCE AND CONSTRUCTION LIMITS	SEE CONSTRUCTION SCHEDULING PLANS
BUILDING - EXISTING	NOTE: PRELIMINARY, NOT FOR CONSTRUCTION	
THRESHOLD STRIP SURFACE (TSS)		
PART 17 APPROACH SURFACE (PTA)		



EXISTING RUNWAY 34L PROFILE VIEW

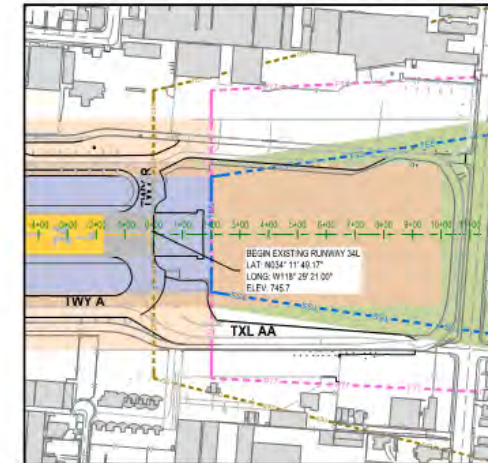


TEMP SHORTENED RUNWAY 16R PLAN VIEW




NOTE: RUNWAY APPROACH AND DEPARTURE SURFACES IAW TABLE 3-2, EB-99

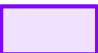
EXISTING RUNWAY 34L PLAN VIEW




## Work Area 7 & 7A

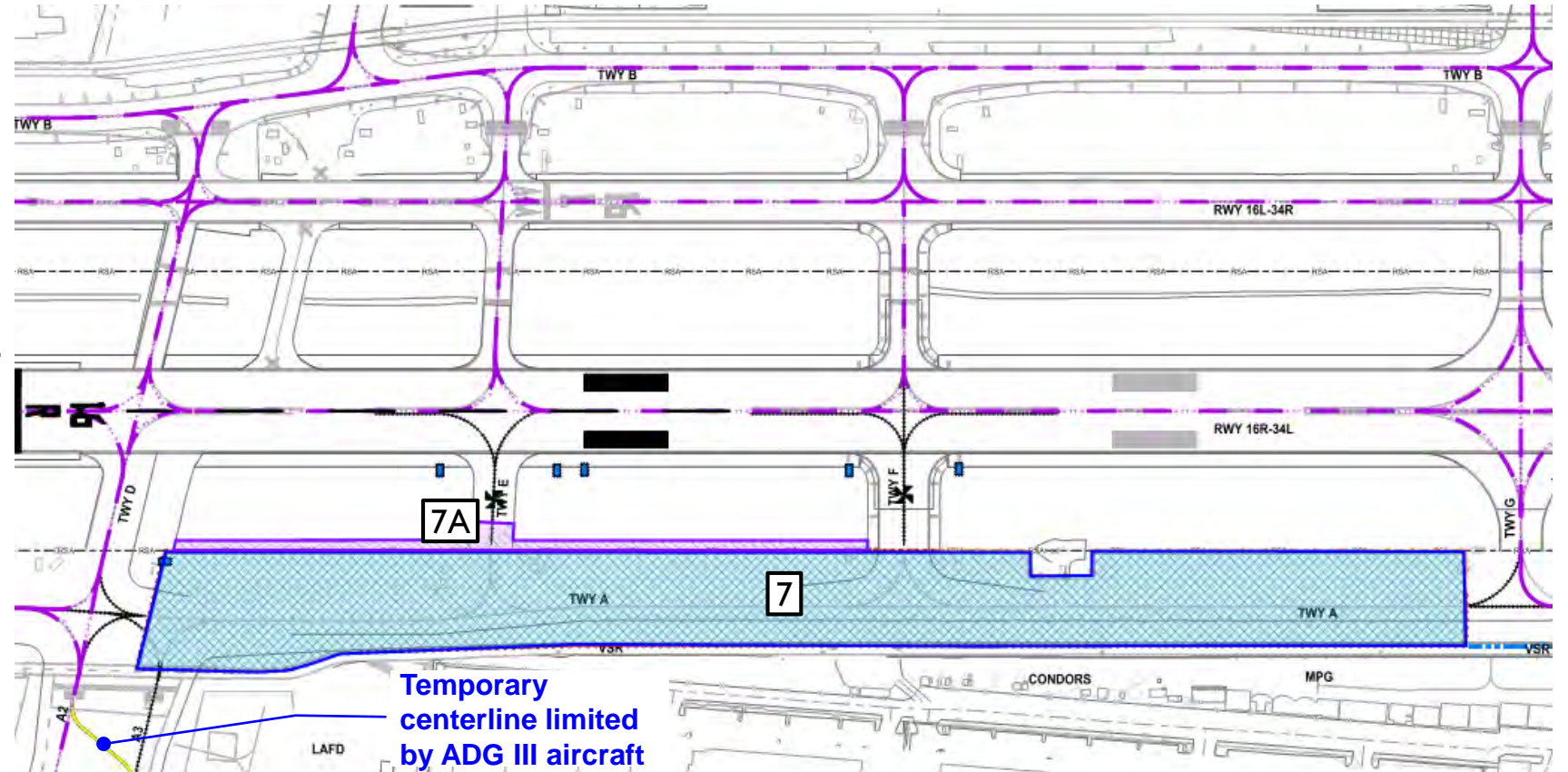
- Late June to Late September
  - 84 Days (12 Weeks)
- Work Area 7A requires 16R temporary nightly closures
- Temporary centerline across A2 and A3
- ILS Non-Operational

 **Unrestricted Daytime Work Area**  
(Minimum 8-Hour Shift, 5 Days/Week)

 **Nighttime Work Area**  
(2200-0600)

 **Accelerated Work Area**  
(Minimum 10-Hour Shift, 6 Days/Week)


 **Already Constructed Work Area**




## WORK AREA 7 & 7A

## Work Area 7B

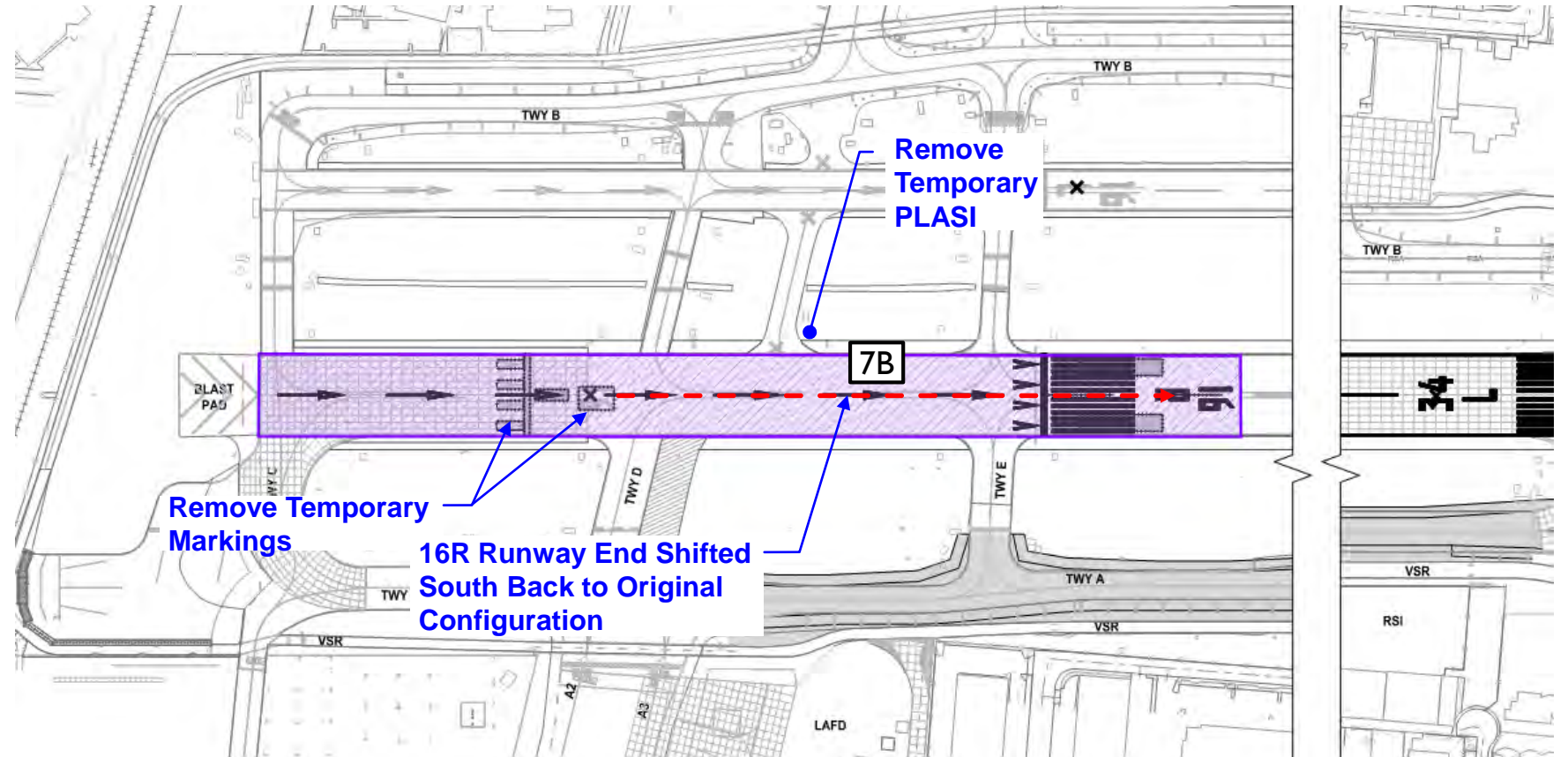
- Late September
- 7 Nights (1 week)
- Restore 16R north end back to original configuration
- Remove temporary PLASI

 **Unrestricted Daytime Work Area**  
(Minimum 8-Hour Shift, 5 Days/Week)

 **Nighttime Work Area**  
(2200-0600)

 **Accelerated Work Area**  
(Minimum 10-Hour Shift, 6 Days/Week)


 **Already Constructed Work Area**

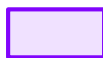


## WORK AREA 7B

## Work Area 8 & 8A

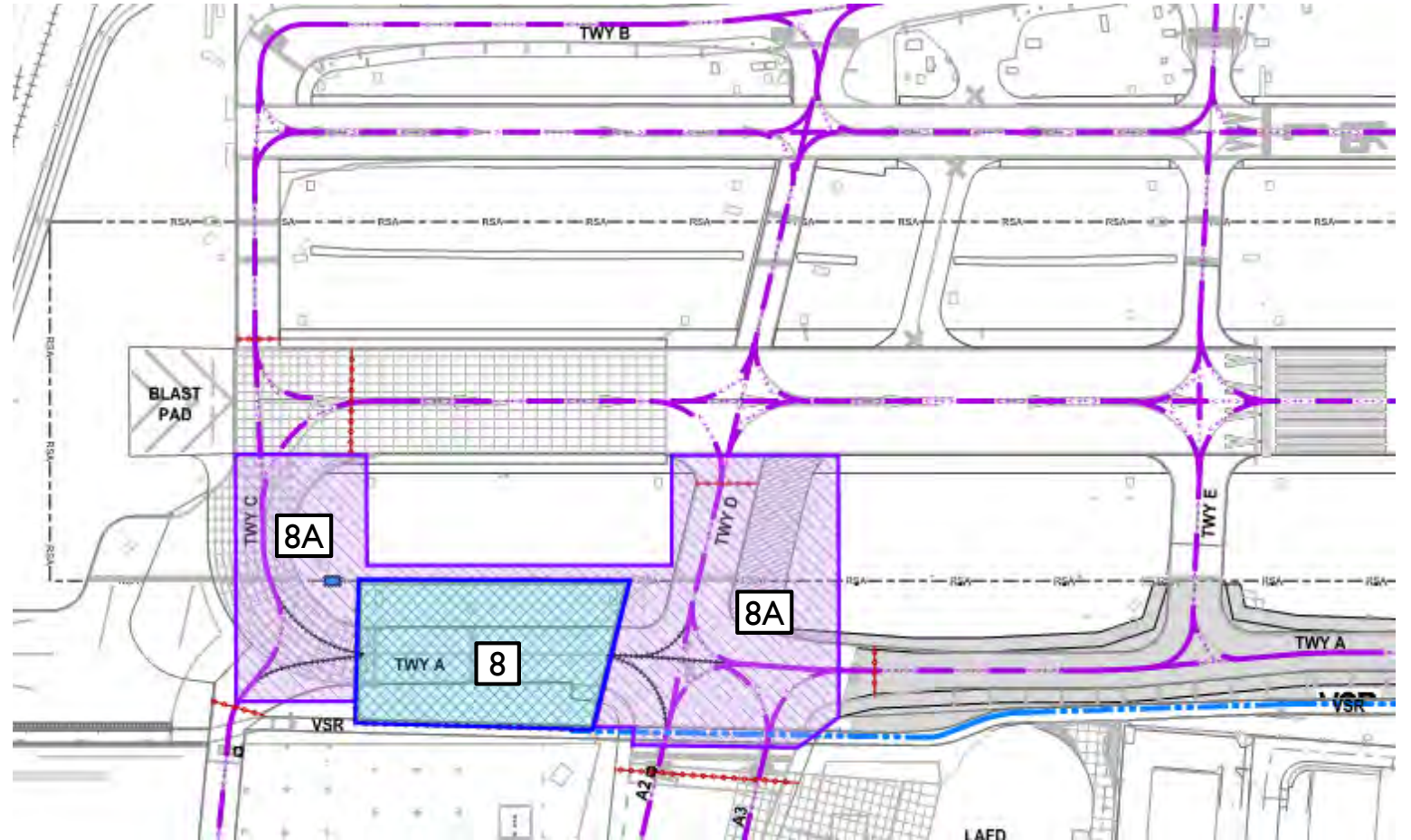
- Late September to Early November
- 35 Days (5 Weeks)
- Portions of Work Area 8A within the RSA require temporary nightly closures of I6R
- ILS Non-Operational

 **Unrestricted Daytime Work Area**  
(Minimum 8-Hour Shift, 5 Days/Week)

 **Nighttime Work Area**  
(2200-0600)

 **Accelerated Work Area**  
(Minimum 10-Hour Shift, 6 Days/Week)

 **Already Constructed Work Area**



## WORK AREA 8 & 8A

## Work Area 9

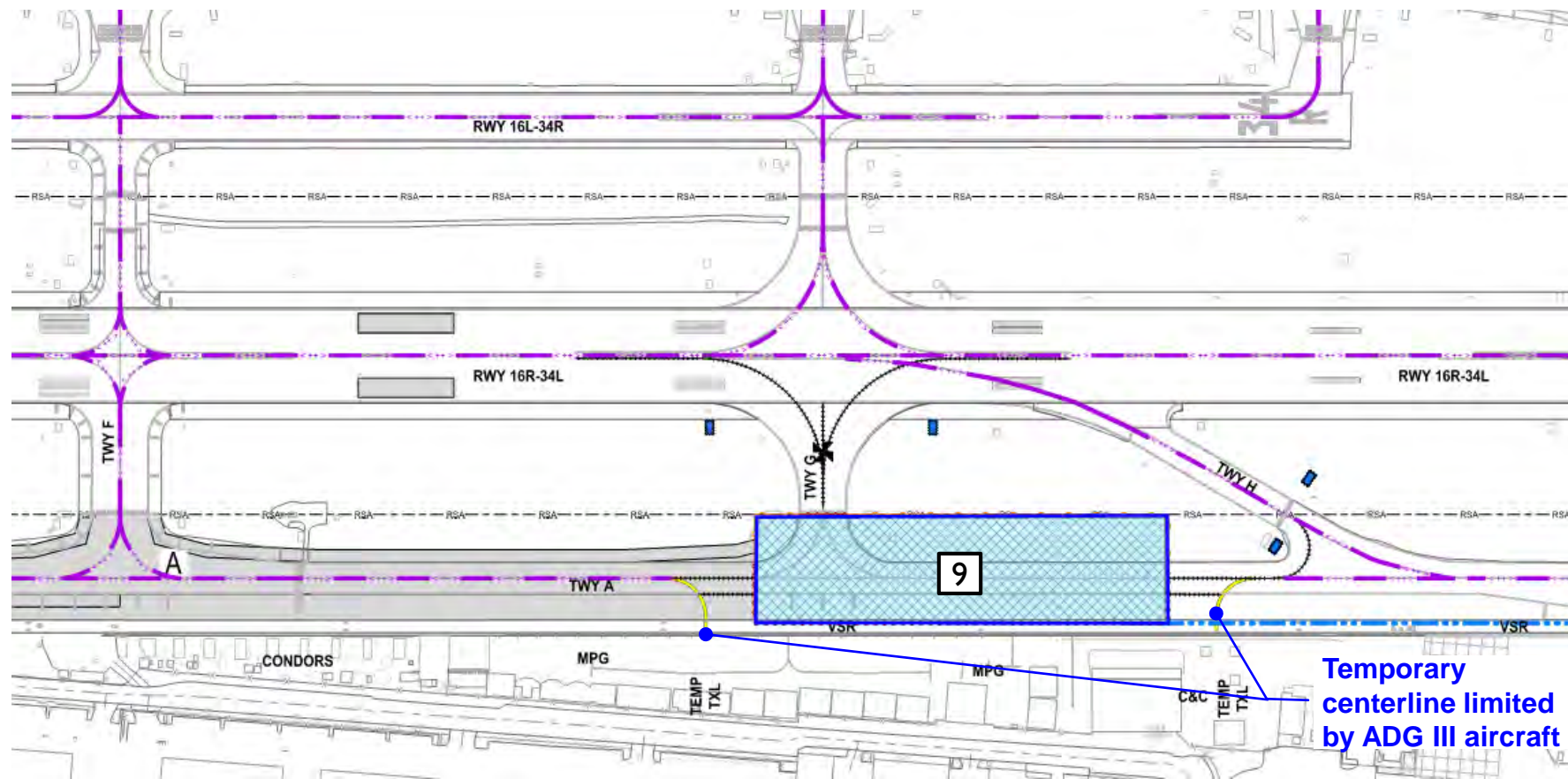
- Early November to Mid December
  - 42 Days (6 Weeks)

 **Unrestricted Daytime Work Area**  
(Minimum 8-Hour Shift, 5 Days/Week)

 **Nighttime Work Area**  
(2200-0600)

 **Accelerated Work Area**  
(Minimum 10-Hour Shift, 6 Days/Week)

 **Already Constructed Work Area**







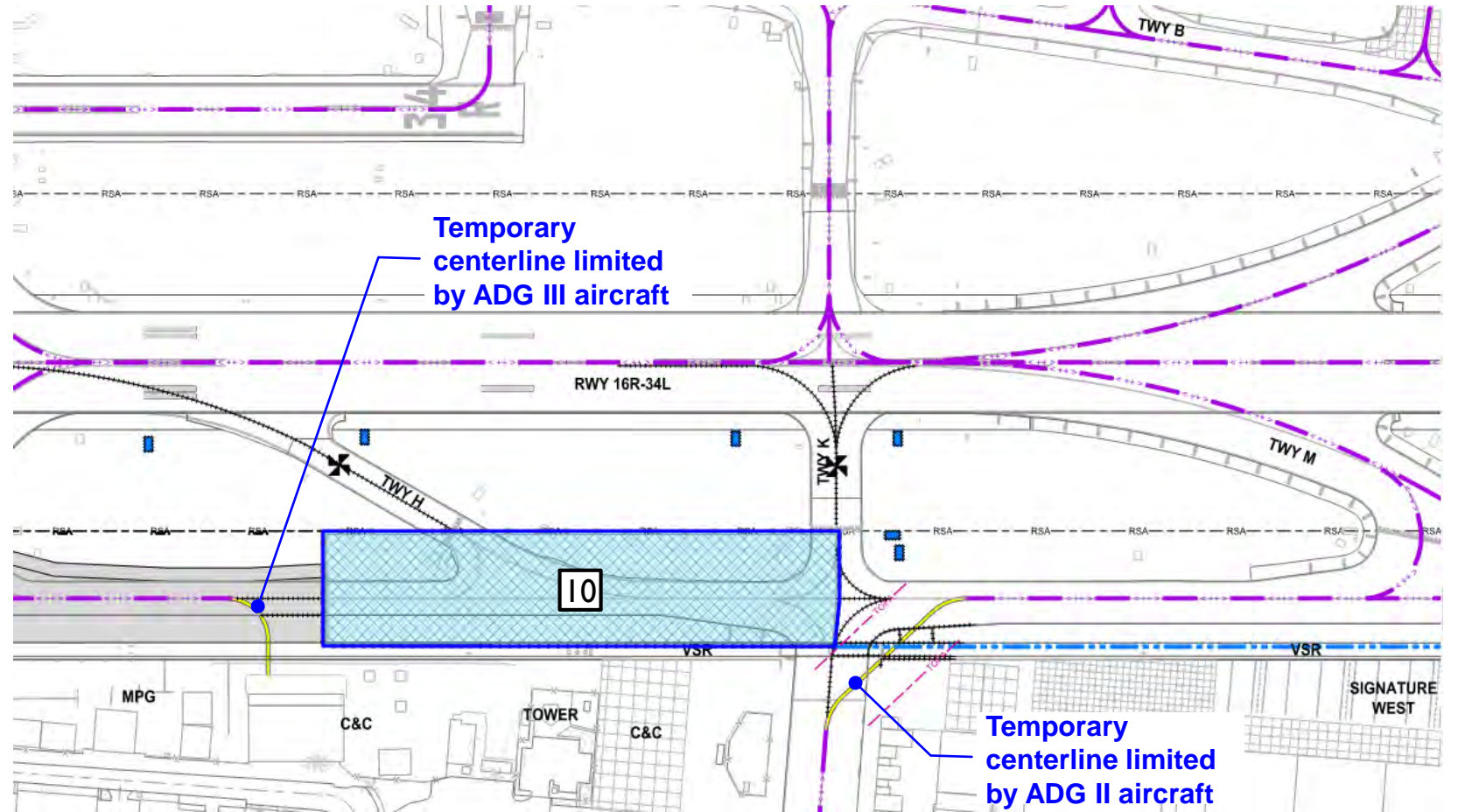
Temporary centerline limited by ADG III aircraft

## WORK AREA 9

## Work Area 10

- Mid December to Late January
  - 42 Days (6 Weeks)
- Temporary centerline access at Taxiway A4 limited to ADG II aircraft


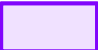


-  **Unrestricted Daytime Work Area**  
(Minimum 8-Hour Shift, 5 Days/Week)
-  **Nighttime Work Area**  
(2200-0600)
-  **Accelerated Work Area**  
(Minimum 10-Hour Shift, 6 Days/Week)
-  **Already Constructed Work Area**

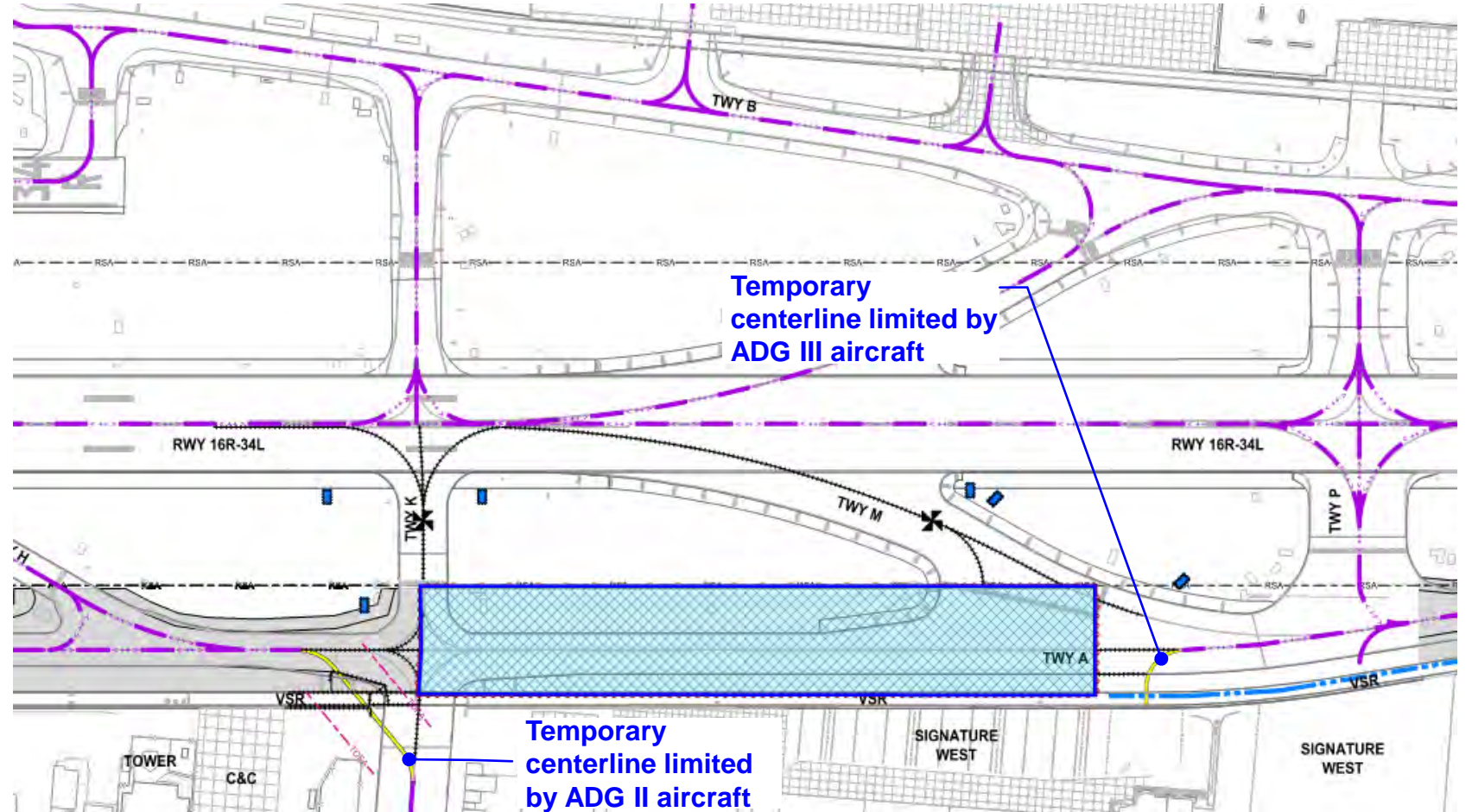


## WORK AREA 10

## Work Area II

- Late January to Late March
  - 56 Days (8 weeks)
- Temporary centerline access at Taxiway A4 limited to ADG II aircraft

-  **Unrestricted Daytime Work Area**  
(Minimum 8-Hour Shift, 5 Days/Week)
-  **Nighttime Work Area**  
(2200-0600)
-  **Accelerated Work Area**  
(Minimum 10-Hour Shift, 6 Days/Week)
-  **Already Constructed Work Area**




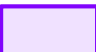
## WORK AREA II




## Work Area 12

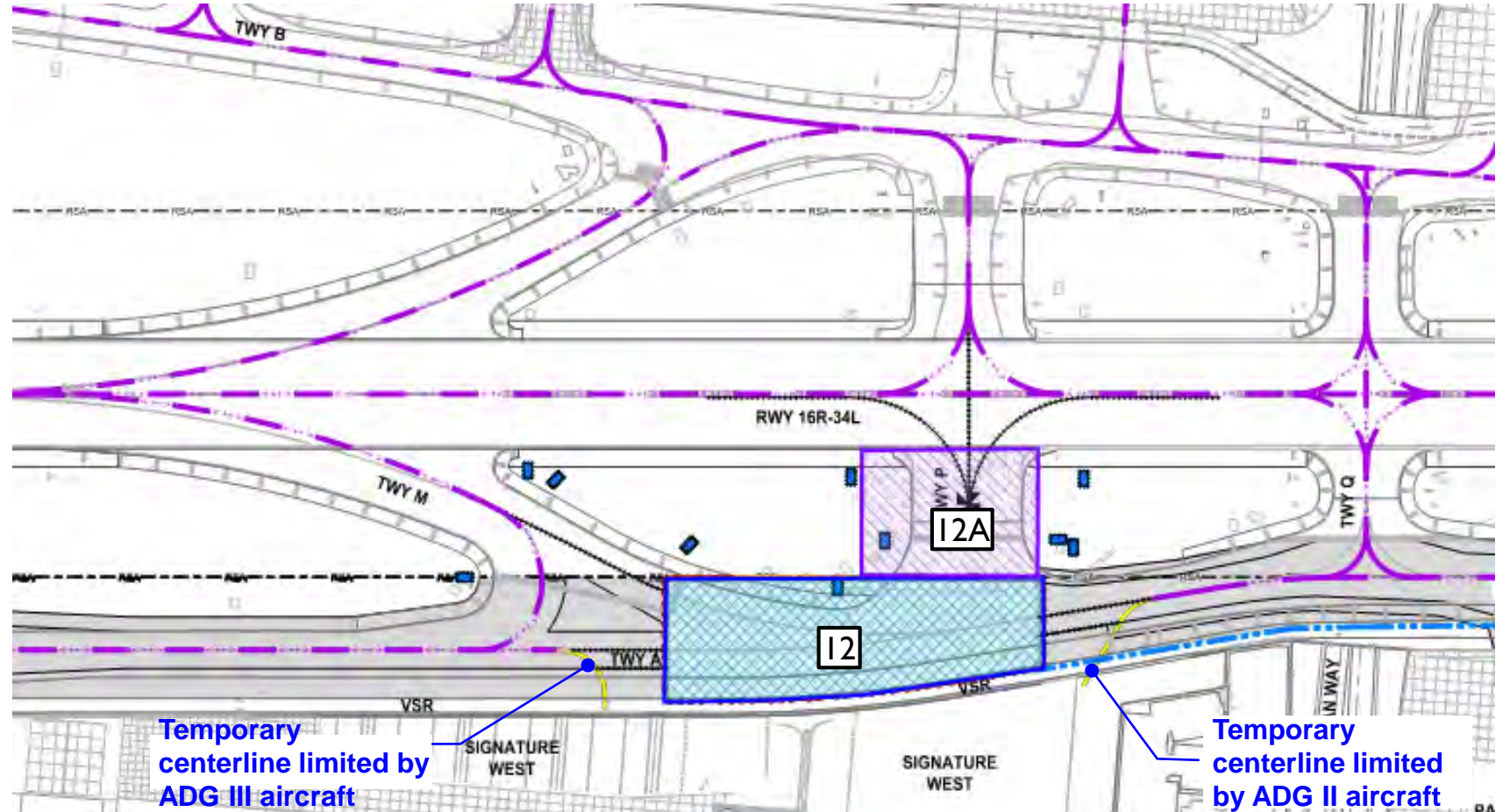
- Late March to Early May
  - 42 days (6 weeks)
- Work Area 12A will require temporary nightly closures of I6R

 **Unrestricted Daytime Work Area**  
(Minimum 8-Hour Shift, 5 Days/Week)

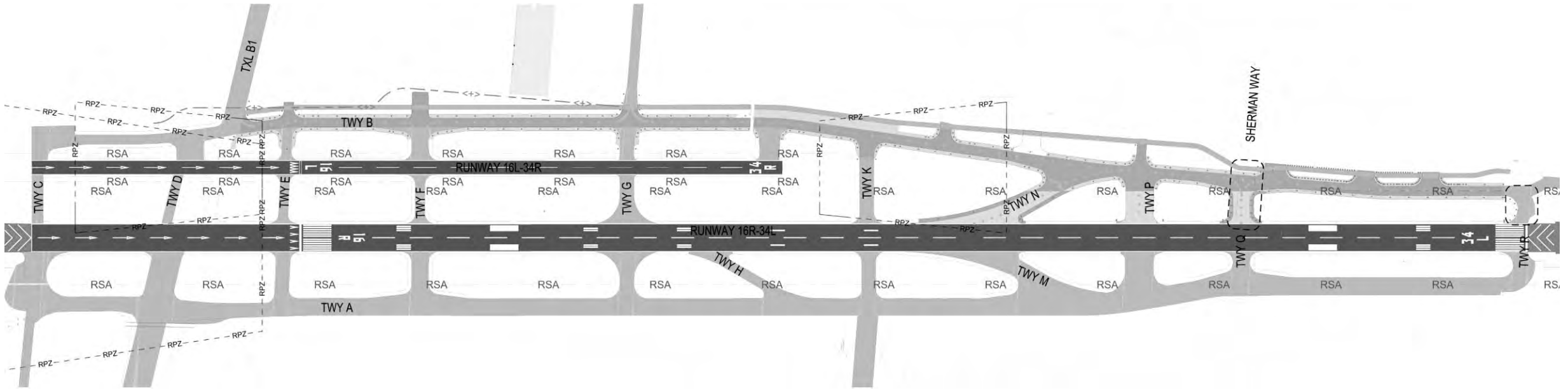
 **Nighttime Work Area**  
(2200-0600)

 **Accelerated Work Area**  
(Minimum 10-Hour Shift, 6 Days/Week)

 **Already Constructed Work Area**



## WORK AREA 12 & 12A

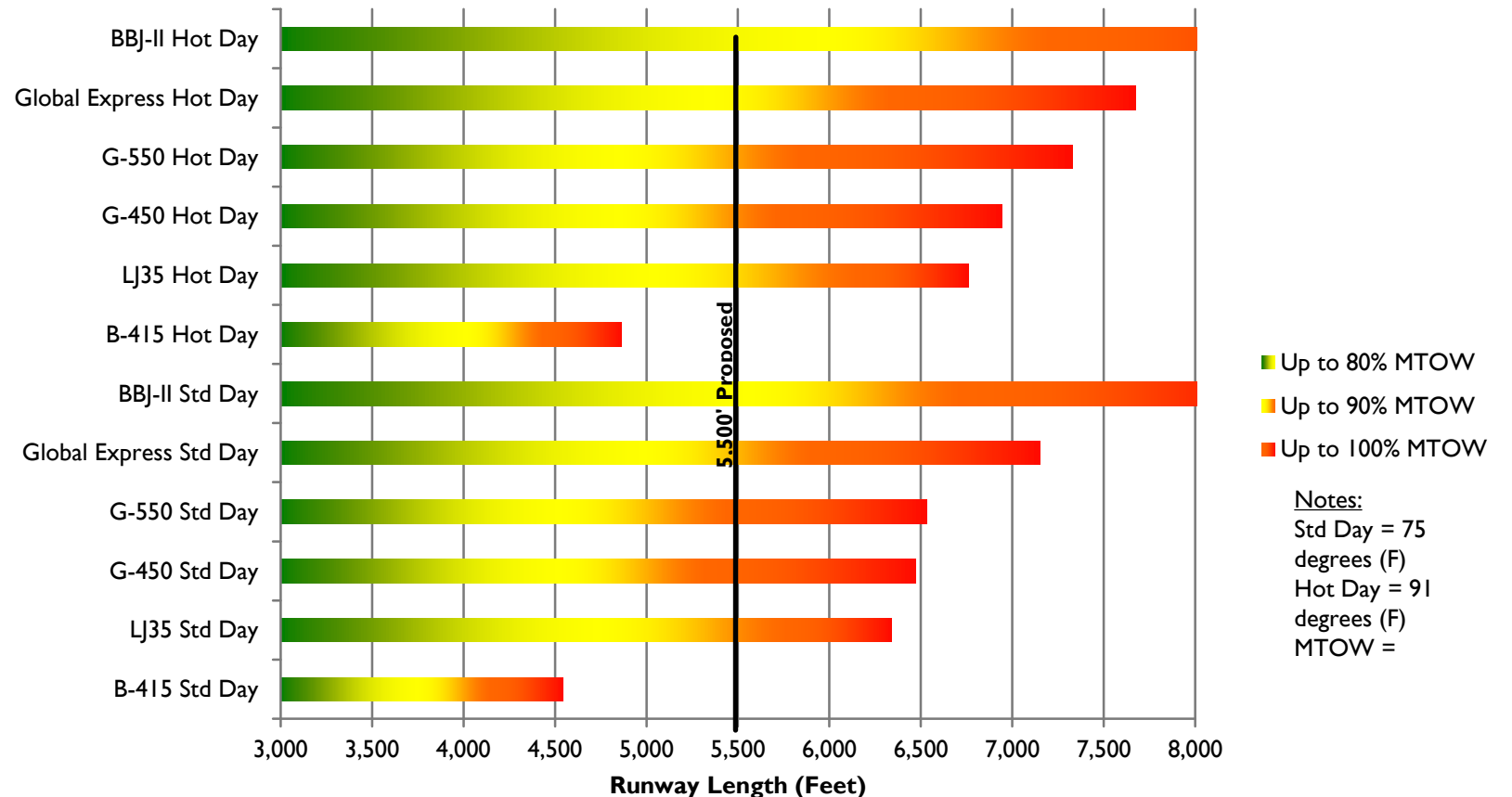


# Q & A

# RUNWAY SHORTENING DURING THE COOL MONTHS

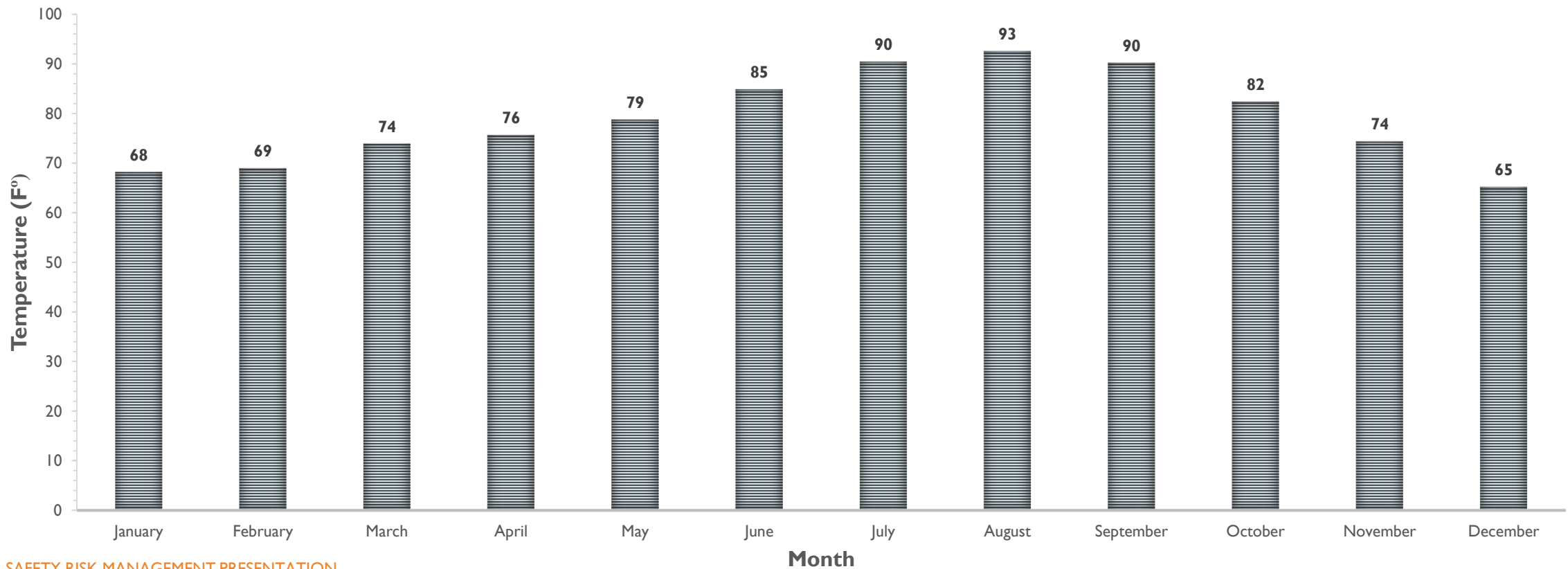
- Operating in the cooler months improves runway performance
- ~85 - 95% MTOW for large aircraft

## Runway Departure Length Requirements



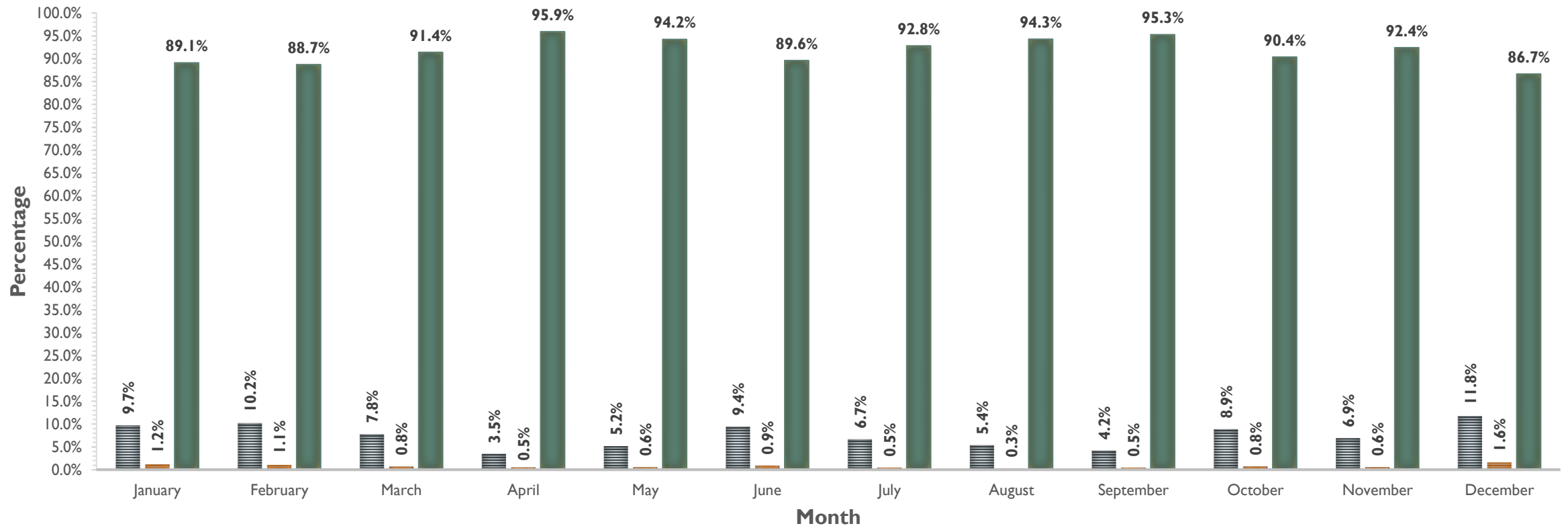
# MONTHLY AVERAGE HIGH TEMPERATURES

## AVERAGE MONTHLY HIGH TEMPERATURES (2007-2017)



# MONTHLY SKY CONDITIONS

## AVERAGE MONTHLY VISIBILITY/ CEILING CONDITIONS DISTRIBUTION (2007-2017)



IFR: Ceiling: 500' >= 1000', Visibility: 1 Mile >= 3 Mile  
 MVFR: Ceiling: 1,000' >= 3,000', Visibility: 3 Mile >= 5 Mile

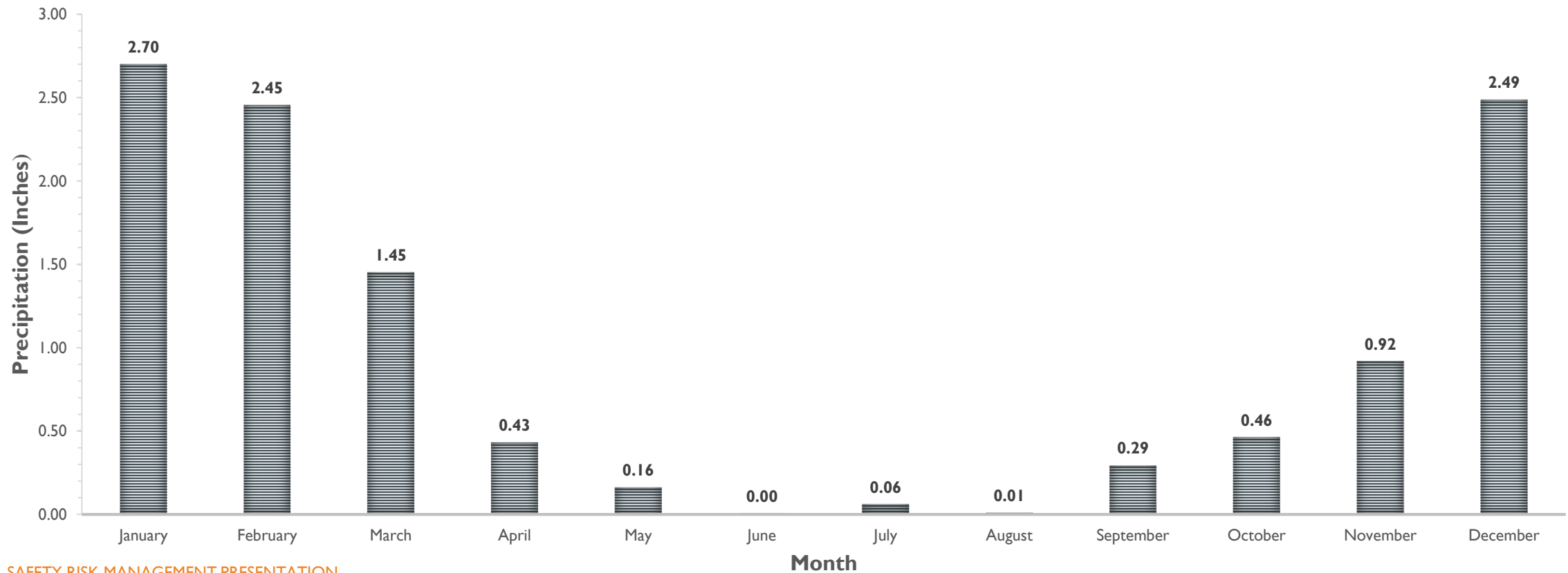
■ Instrument Flight Rules (IFR)

■ Marginal Visual Flight Rules (MVFR)

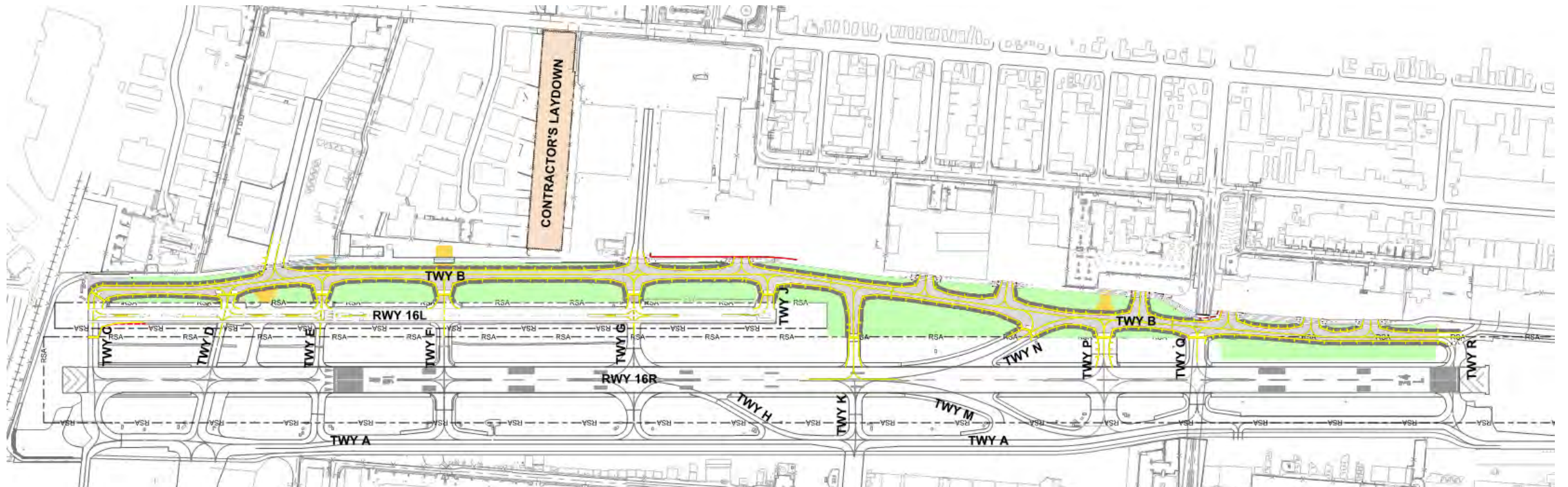
■ Visual Flight Rules (VFR)

# MONTHLY RAINFALL TOTALS

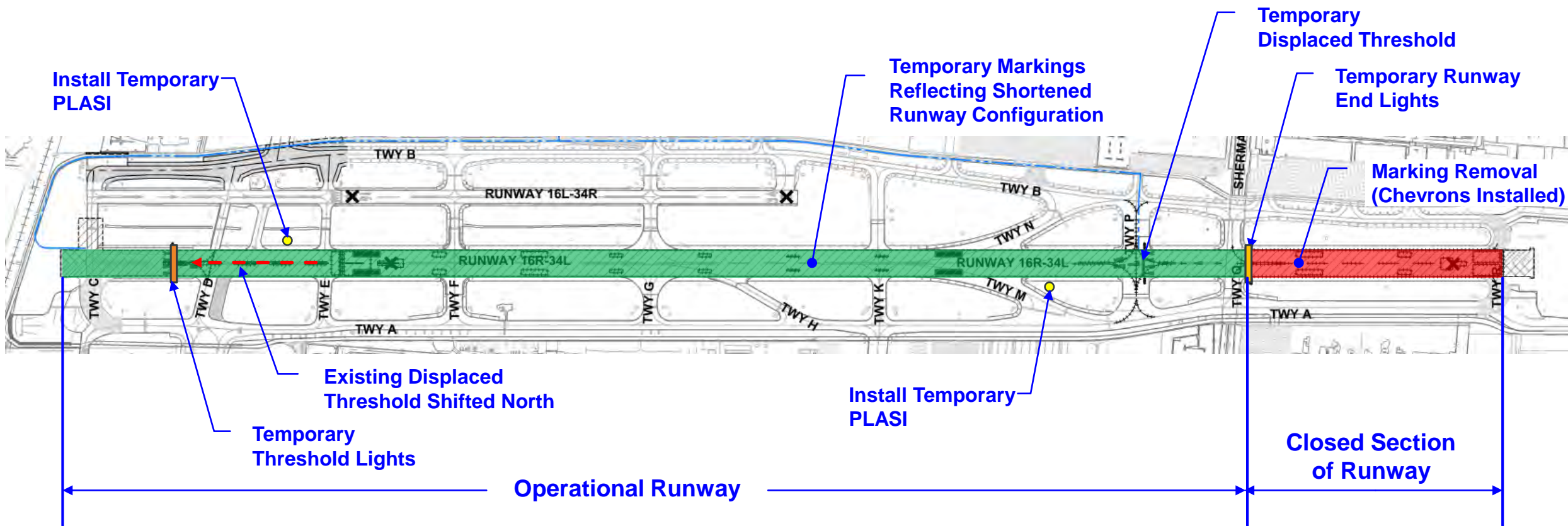
AVERAGE MONTHLY RAINFALL TOTALS (2007-2017)



# TAXIWAY B PROJECT LIMITS



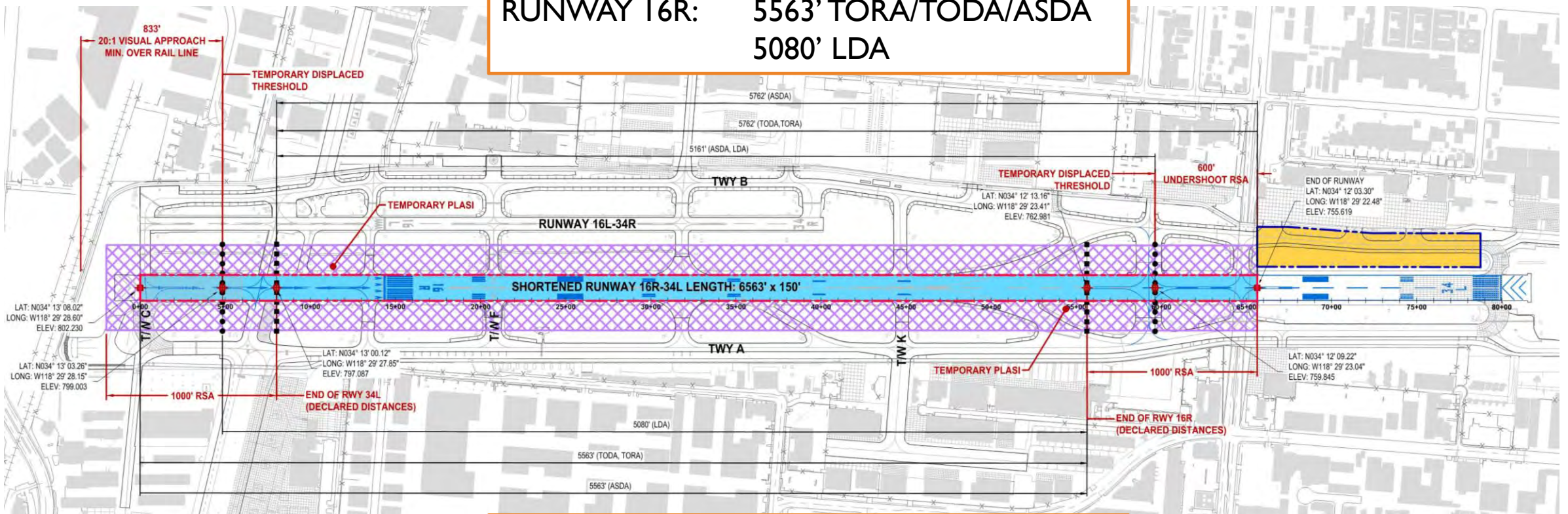
# TAXIWAY B – 16R SHORTENING CONFIGURATION





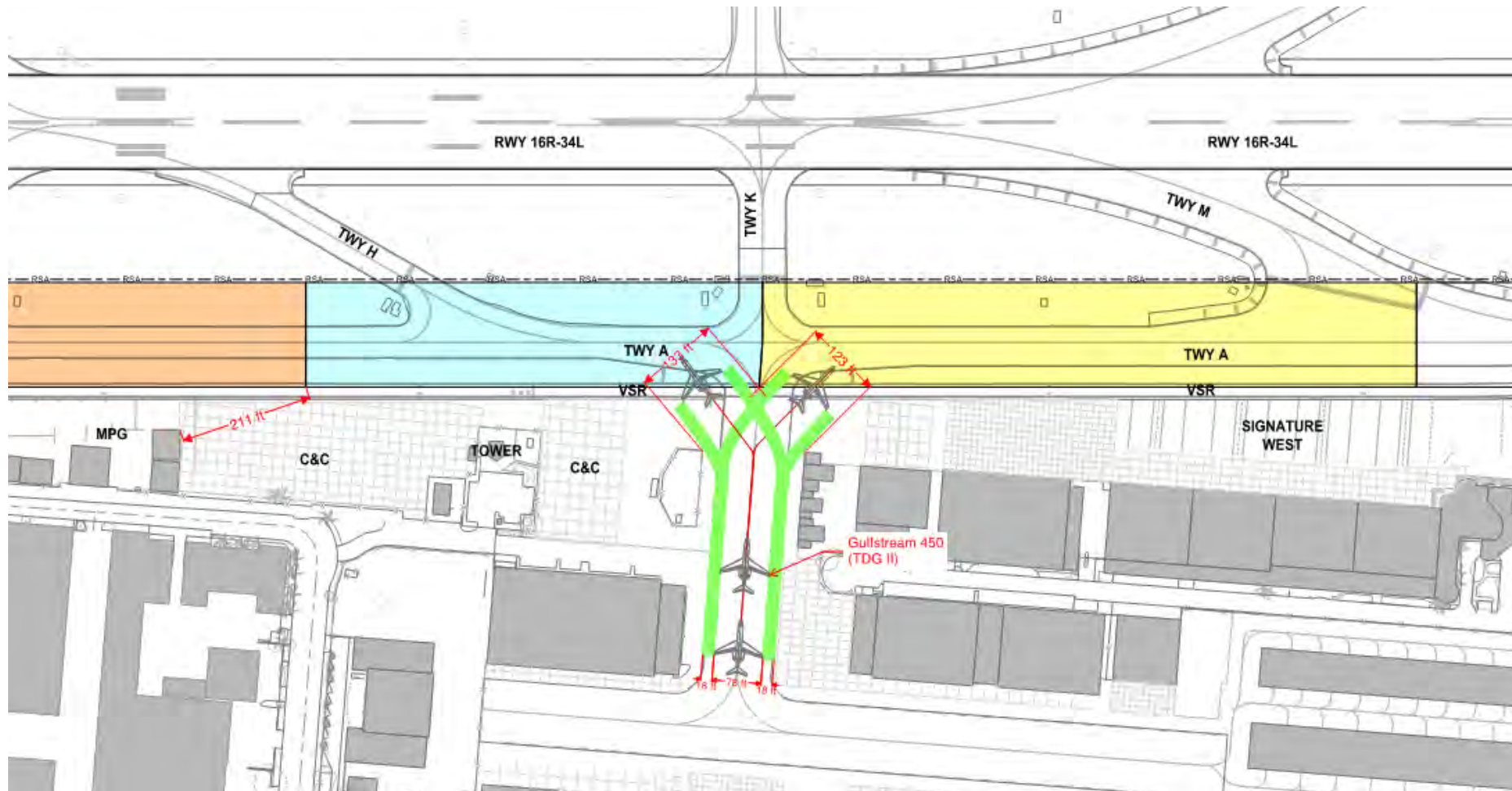
# TAXIWAY B – I6R SHORTENING

**RUNWAY I6R: 5563' TORA/TODA/ASDA  
5080' LDA**



**RUNWAY 34L: 5762' TORA/TODA/ASDA  
5161' LDA**

# TAXIWAY K – AVIPLAN TURNING MANEUVERS



# TAXIWAY K – AVIPLAN TURNING MANEUVERS

