

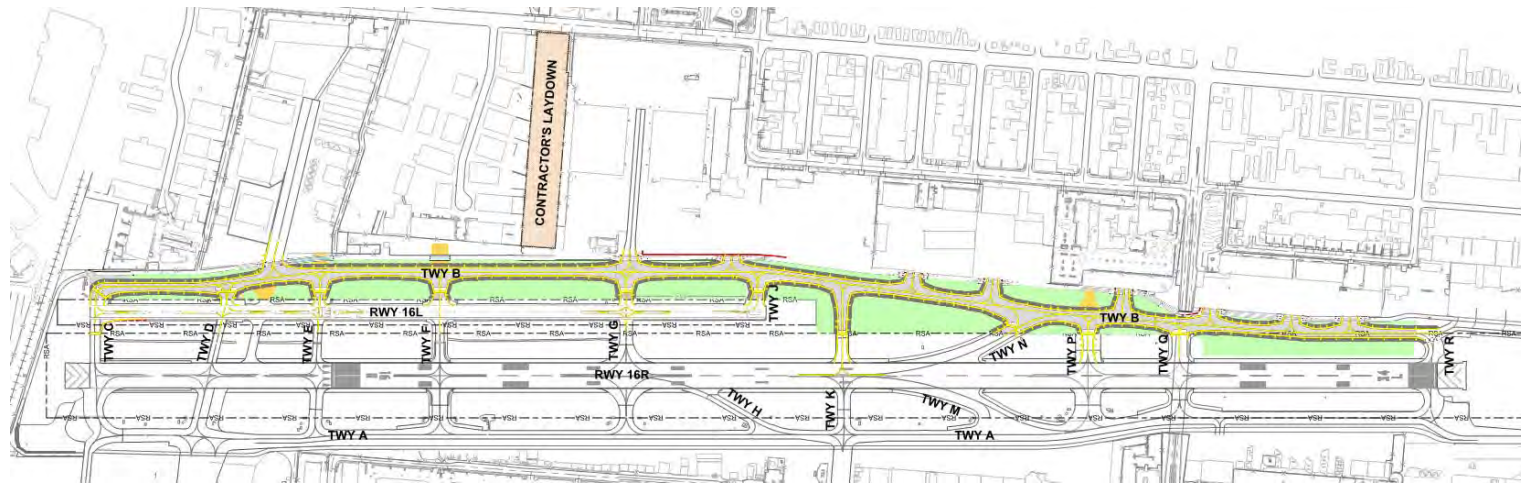


TAXIWAY B REHABILITATION – PHASE I

VAN NUYS AIRPORT – LOS ANGELES WORLD AIRPORTS



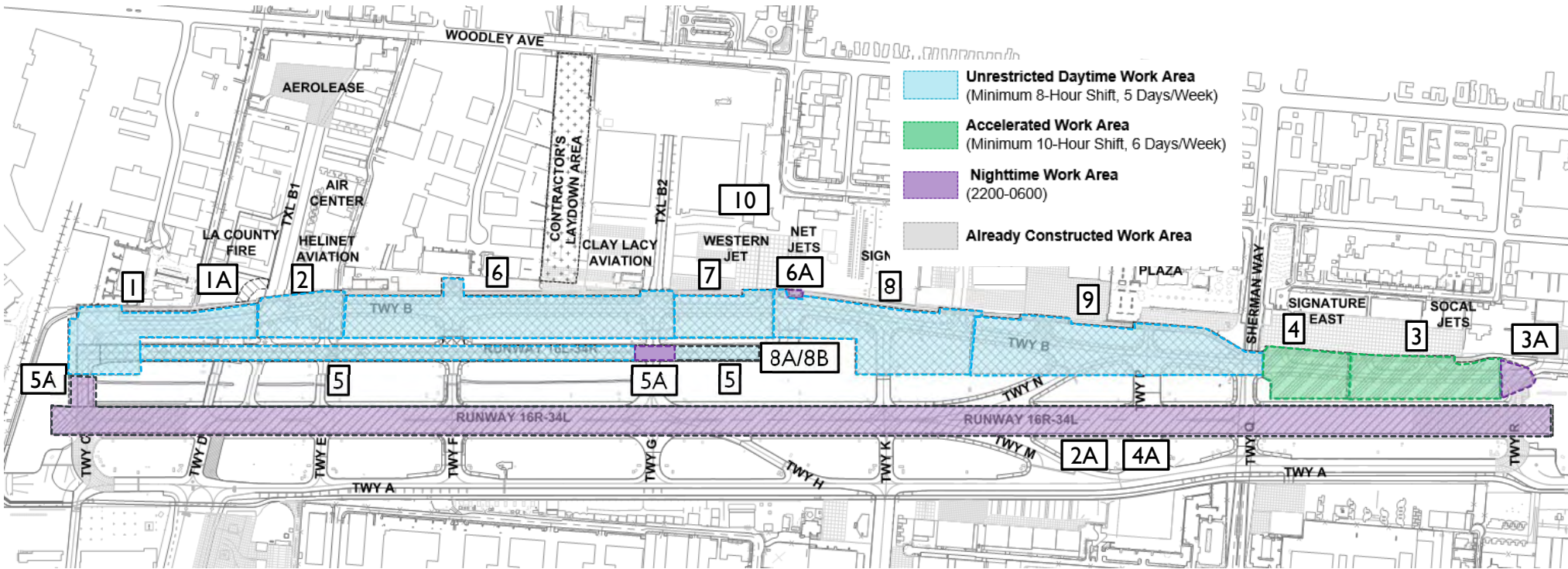
CURRENT PROJECT SCOPE



- Project Limits: Taxiway B from Taxiway C to Taxiway R
- FAA ADG III Taxiway Geometry
- Full Depth Taxiway Pavement Reconstruction, 20 year design life
- LED Centerline and Edge Lights
- Airfield Signage Upgrades
- Runway 16L Hold Bar Enhancement
- Infield grading and drainage improvements
- Blast resistant fencing aft of Taxiway C
- Removal of compass calibration pad, and extensions of Taxiway E and B1

Slide 3

JL2 Update Schedule, line 26 summary task is too long
James Long, 8/6/2018







OVERALL PHASING PLAN

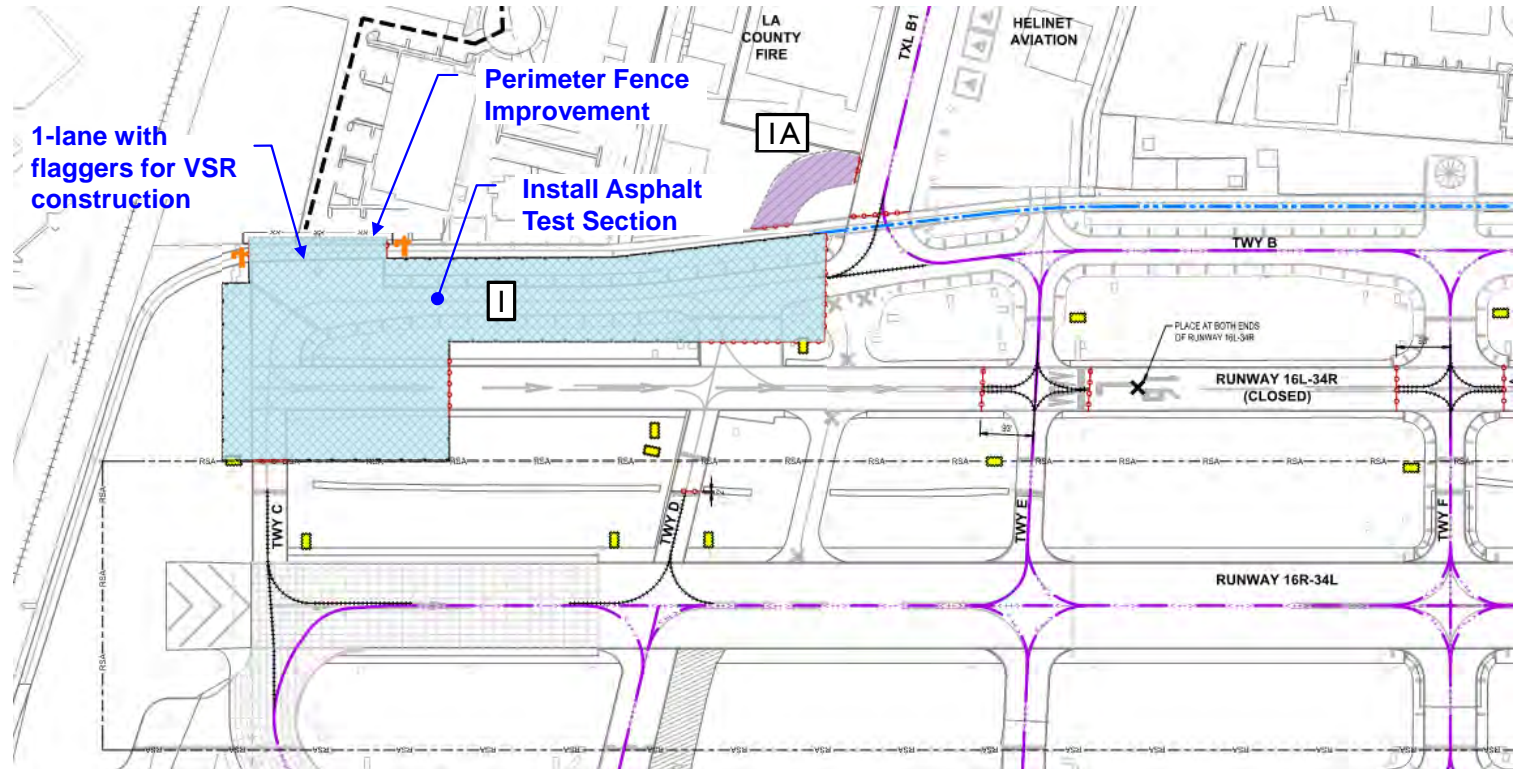
Slide 4

JL1 add colors to differentiate phases
James Long, 8/6/2018

Work Area I

- Early January through Mid February
 - 42 Days (6 Weeks)
- Runway 16L Closed
- Taxiway B closed North of Taxilane B1

-  **Unrestricted Daytime Work Area**
(Minimum 8-Hour Shift, 5 Days/Week)
-  **Accelerated Work Area**
(Minimum 10-Hour Shift, 6 Days/Week)
-  **Nighttime Work Area**
(2200-0600)
-  **Already Constructed Work Area**

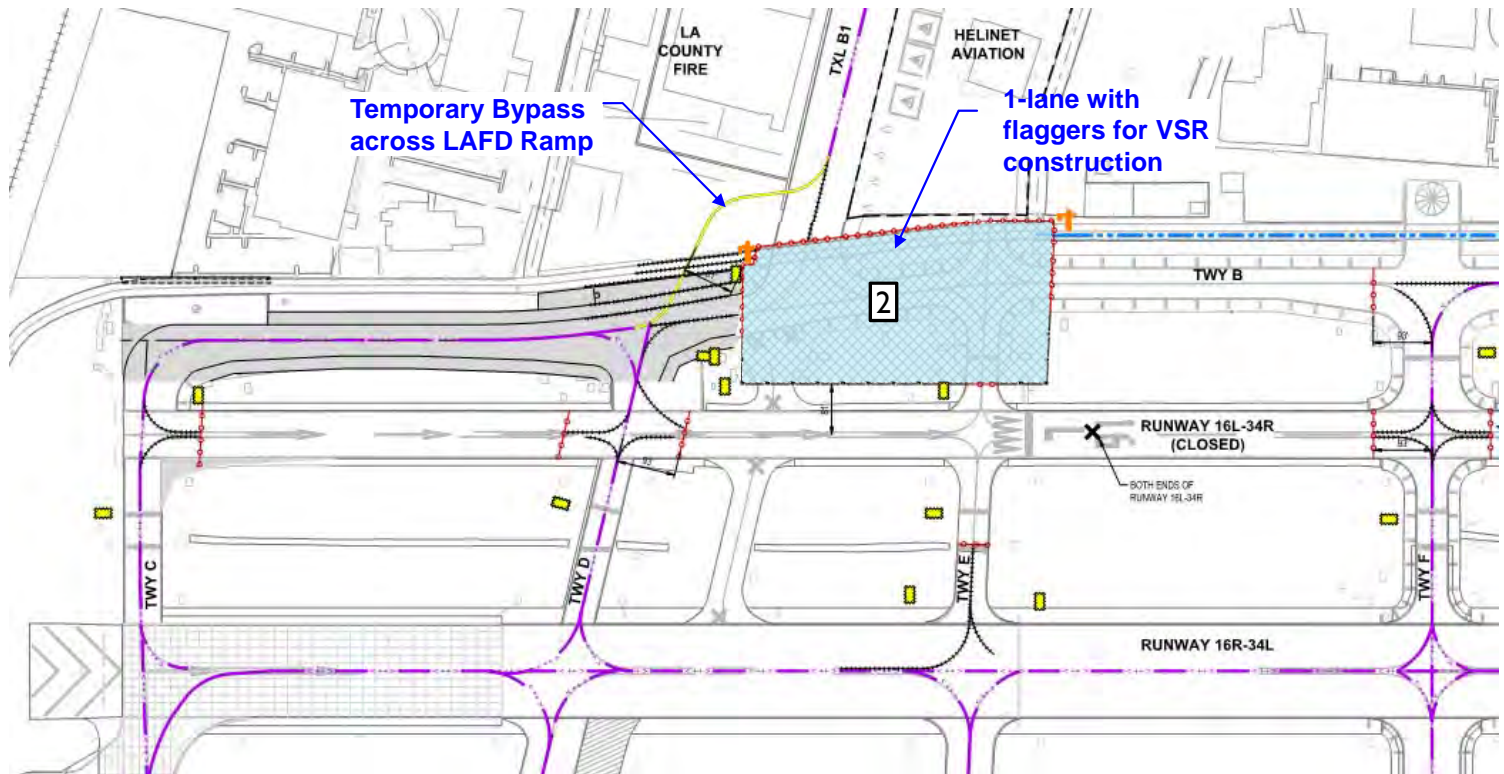


WORK AREA I & IA

Work Area 2

- Mid February through Late March
 - 35 Days (5 Weeks)
- Runway 16L Closed
- Taxiway B closed (Taxilane BI to Taxiway E)

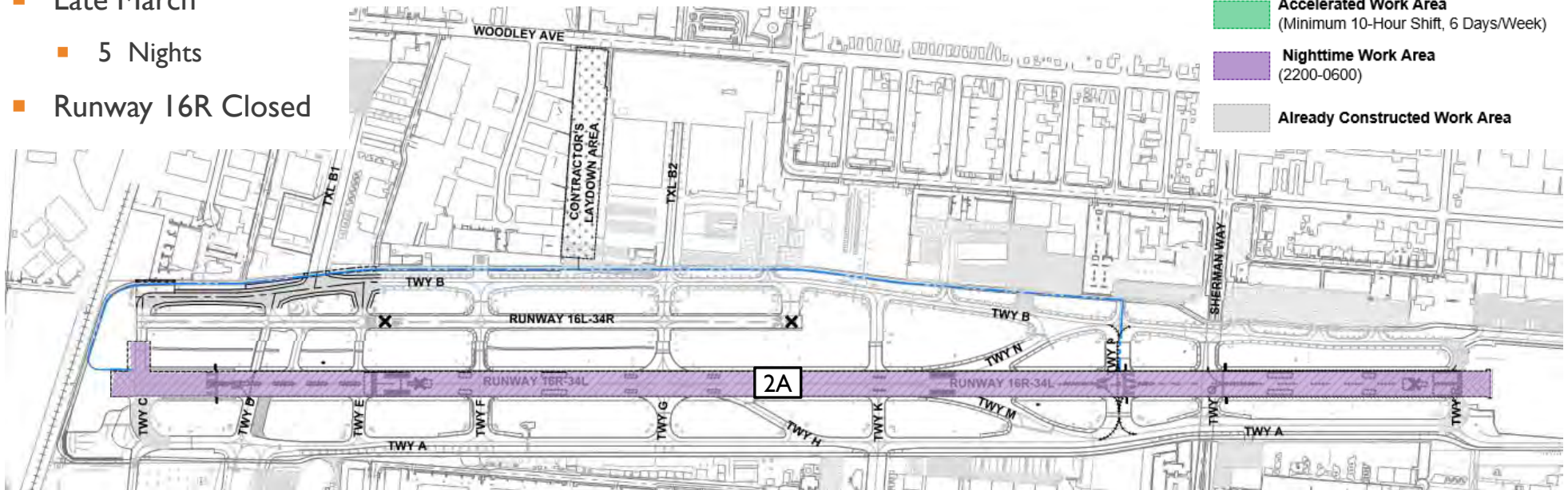
- **Unrestricted Daytime Work Area**
(Minimum 8-Hour Shift, 5 Days/Week)
- **Accelerated Work Area**
(Minimum 10-Hour Shift, 6 Days/Week)
- **Nighttime Work Area**
(2200-0600)
- **Already Constructed Work Area**



WORK AREA 2

Work Area 2A

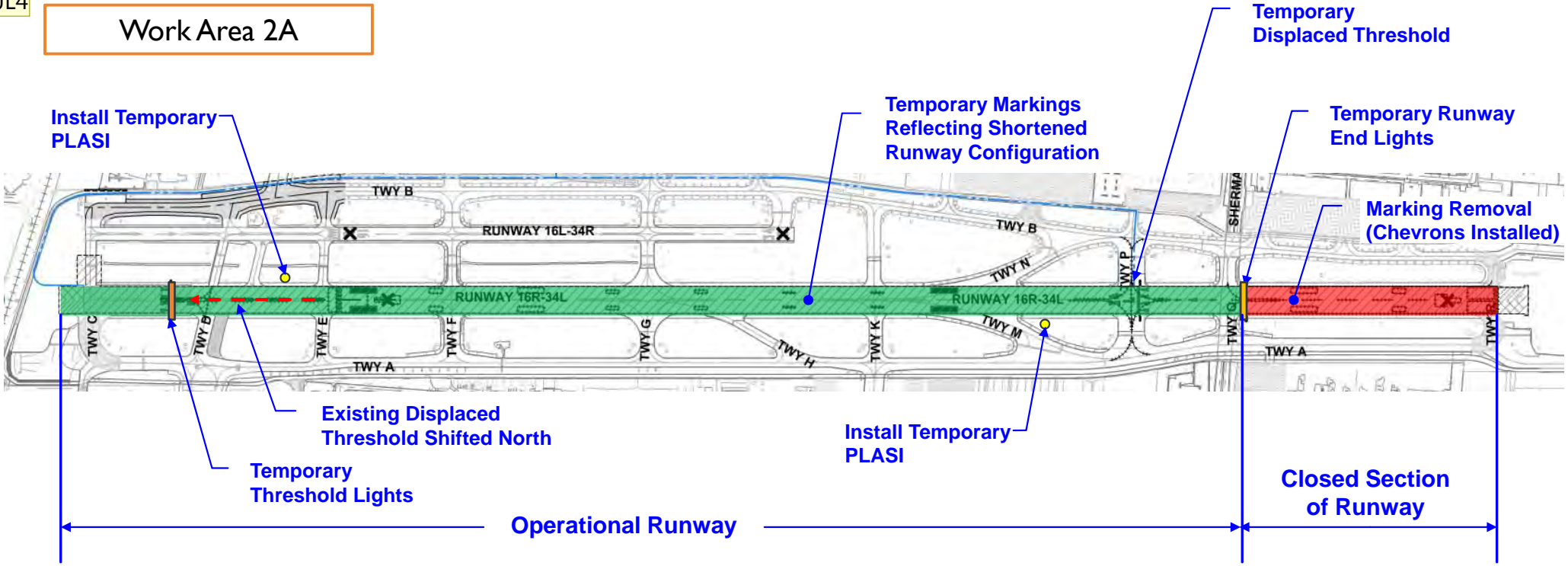
- Late March
 - 5 Nights
- Runway 16R Closed



WORK AREA 2A



Work Area 2A



WORK AREA 2A

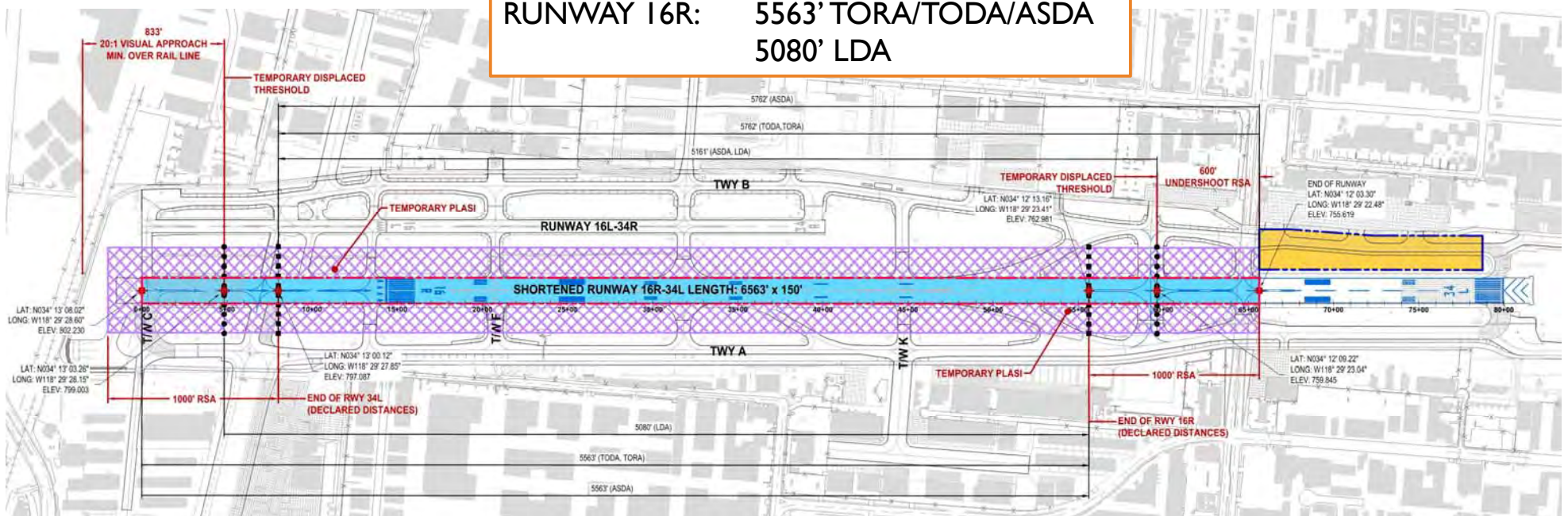
Slide 8

JL3 Include
James Long, 8/6/2018

JL4 add work area 2A plan sheet which shows the work we are doing. will need to talk through the threshold relocation
James Long, 8/6/2018

PROPOSED RUNWAY 16R SHORTENING

RUNWAY 16R: 5563' TORA/TODA/ASDA
5080' LDA



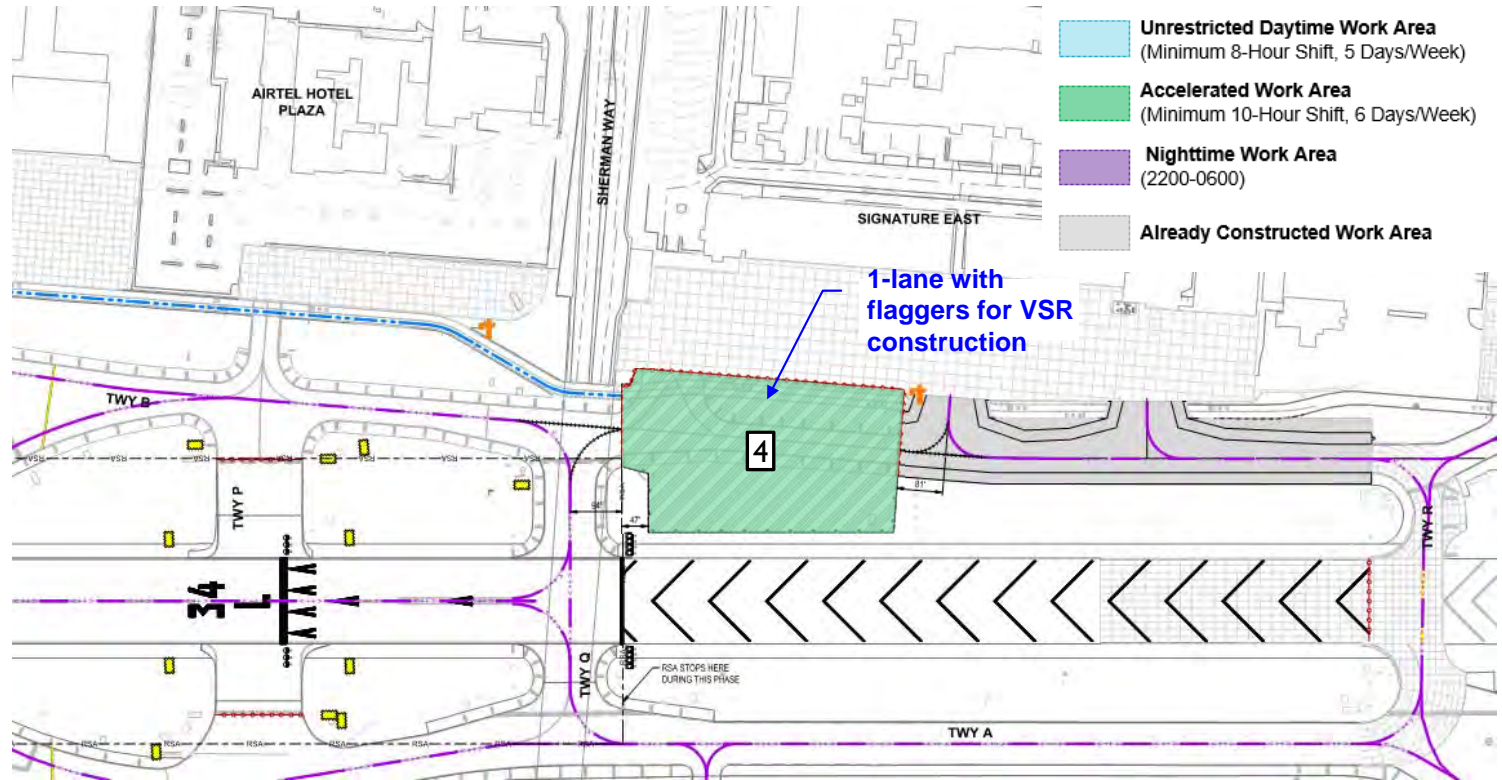
RUNWAY 34L: 5762' TORA/TODA/ASDA
5161' LDA

Slide 10

JL5 Use same text box size and location from Work Area 4 slide
James Long, 8/6/2018

Work Area 4

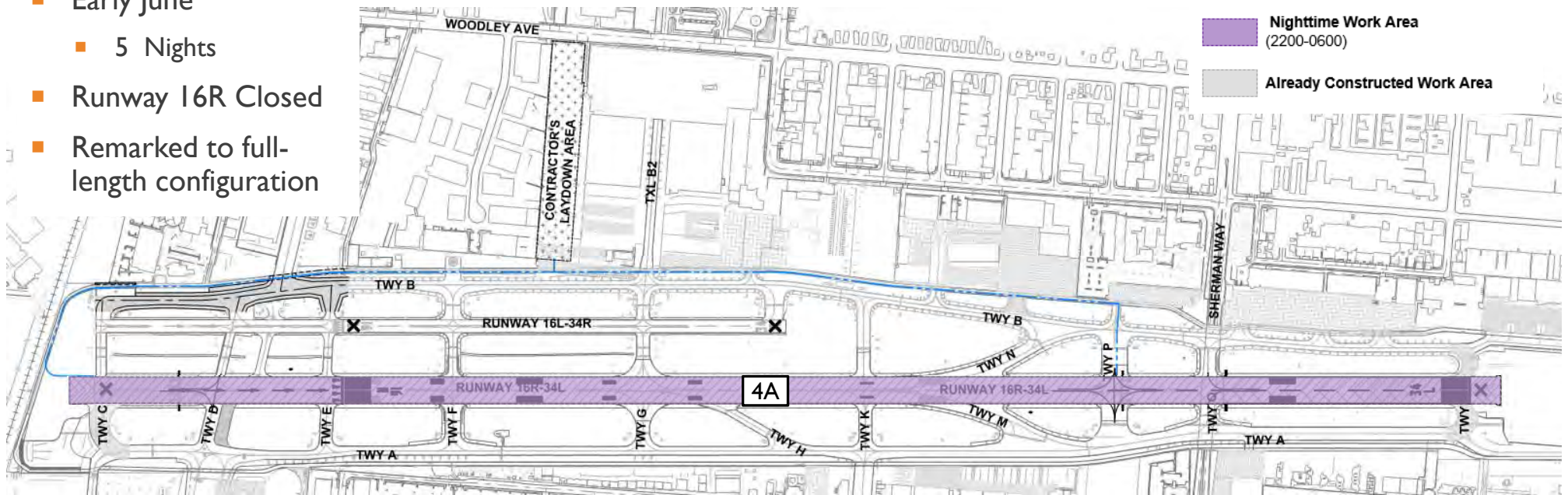
- Early May through Late May/Early June
 - 28 Days (4 Weeks)
- Runway I6R Shortened
- Taxiway B closed from Taxiway Q to 2nd Signature East Entrance



WORK AREA 4

Work Area 4A





- Early June
 - 5 Nights
- Runway 16R Closed
- Remarkered to full-length configuration

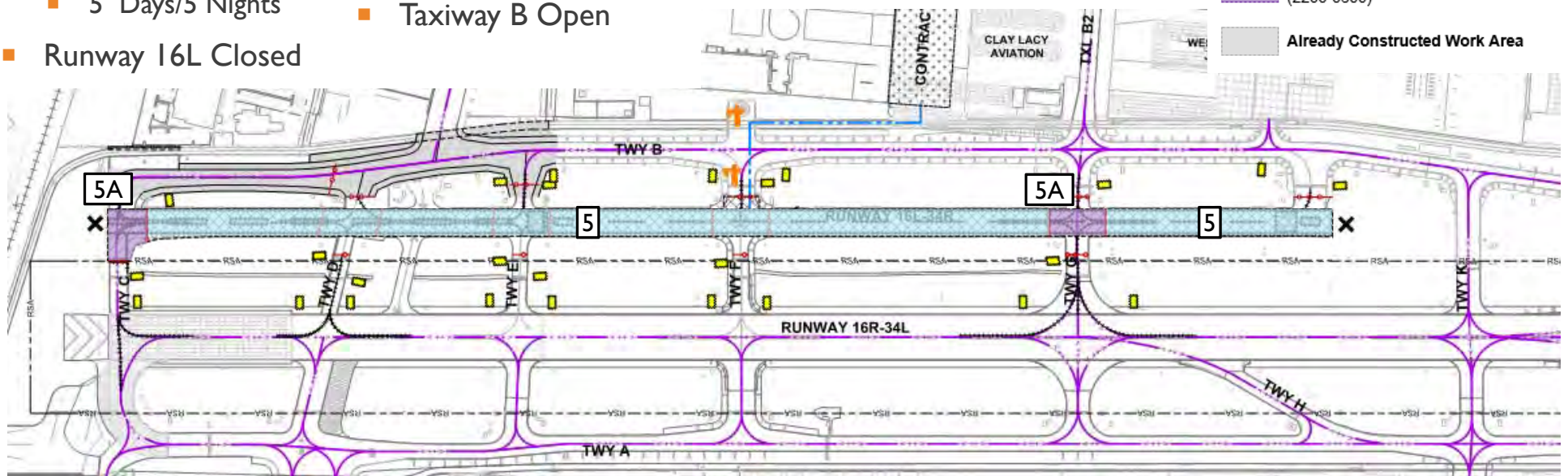


WORK AREA 4A

Work Area 5 & 5A

- Early June
 - 5 Days/5 Nights
- Runway 16R Open
 - Taxiway B Open
- Runway 16L Closed

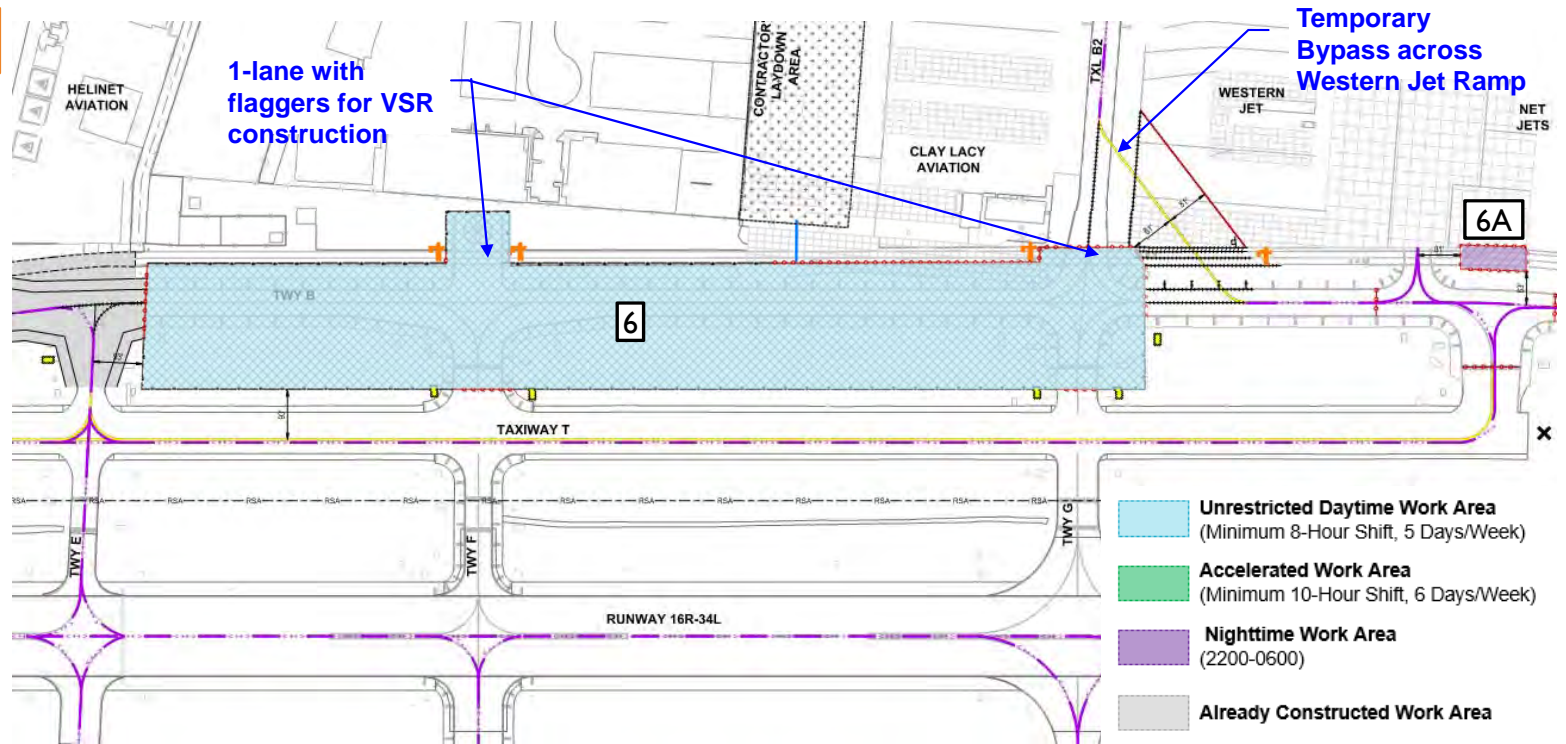
-  **Unrestricted Daytime Work Area**
(Minimum 8-Hour Shift, 5 Days/Week)
-  **Accelerated Work Area**
(Minimum 10-Hour Shift, 6 Days/Week)
-  **Nighttime Work Area**
(2200-0600)
-  **Already Constructed Work Area**



WORK AREA 5 & 5A

Work Area 6

- Mid June through Mid August
 - 70 Days (10 Weeks)
- Runway 16L Closed (Temp. Taxiway T operational)
- Taxiway B closed from Taxiway E to Taxilane B2

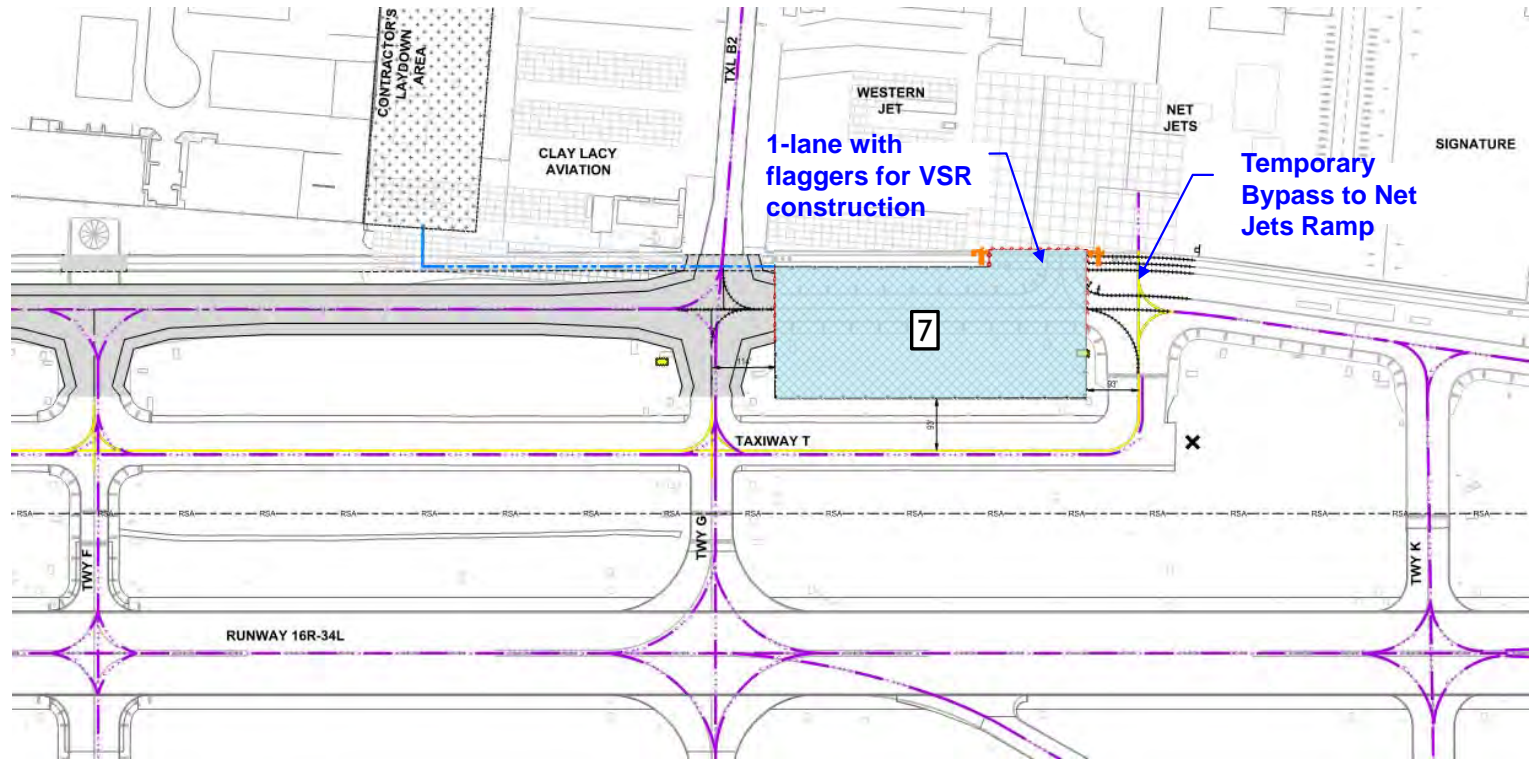


WORK AREA 6 & 6A

Work Area 7

- Late August through Late September
 - 35 Days (5 Weeks)
- Runway 16L Closed (Temp. Taxiway T)
- Taxiway B closed from Taxiway G to Taxiway J




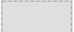
- **Unrestricted Daytime Work Area**
(Minimum 8-Hour Shift, 5 Days/Week)
- **Accelerated Work Area**
(Minimum 10-Hour Shift, 6 Days/Week)
- **Nighttime Work Area**
(2200-0600)
- **Already Constructed Work Area**

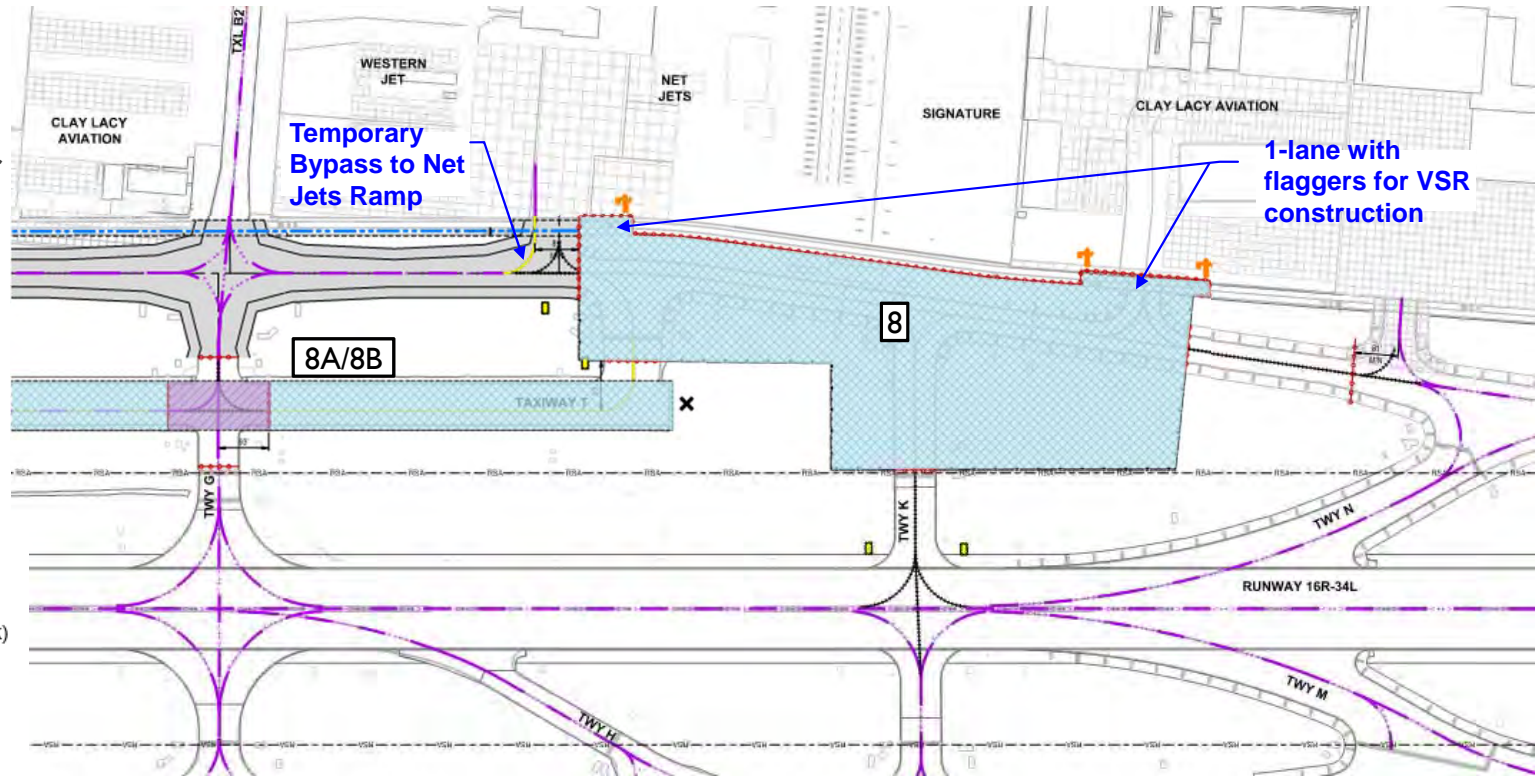


WORK AREA 7

Work Area 8

- Late September through Mid November
 - 56 Days (8 Weeks)
- Runway 16L Closed
- Taxiway B closed from Taxiway J to Taxiway N





-  **Unrestricted Daytime Work Area**
(Minimum 8-Hour Shift, 5 Days/Week)
-  **Accelerated Work Area**
(Minimum 10-Hour Shift, 6 Days/Week)
-  **Nighttime Work Area**
(2200-0600)
-  **Already Constructed Work Area**

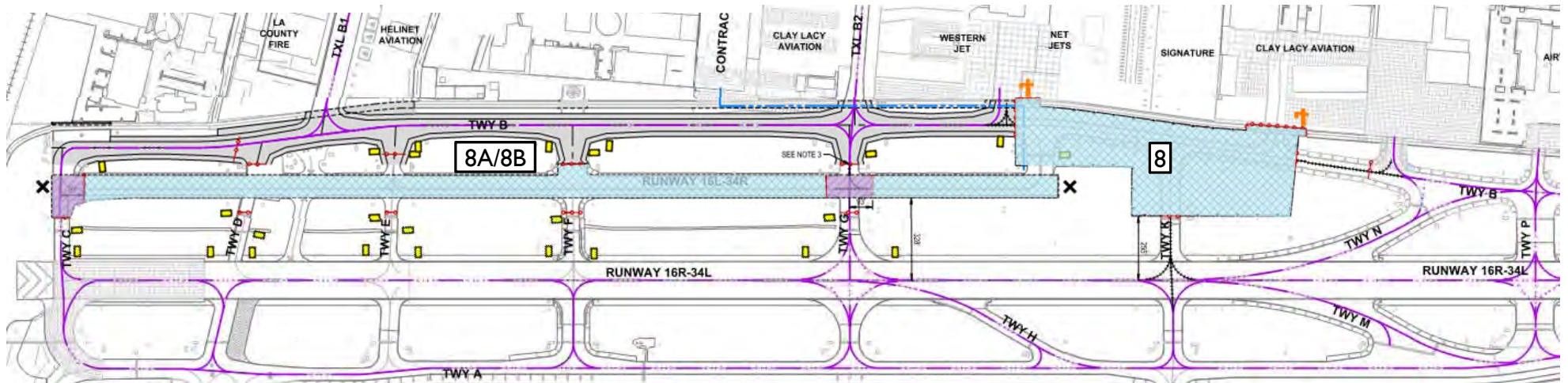


WORK AREA 8

Work Area 8A & 8B

- Late September through Early November
 - 5 Days/5 Nights for I6L Slurry Seal
- 30-Day Cure Period
 - 5 Days/5 Nights for I6L Remarking

-  **Unrestricted Daytime Work Area**
(Minimum 8-Hour Shift, 5 Days/Week)
-  **Accelerated Work Area**
(Minimum 10-Hour Shift, 6 Days/Week)
-  **Nighttime Work Area**
(2200-0600)
-  **Already Constructed Work Area**

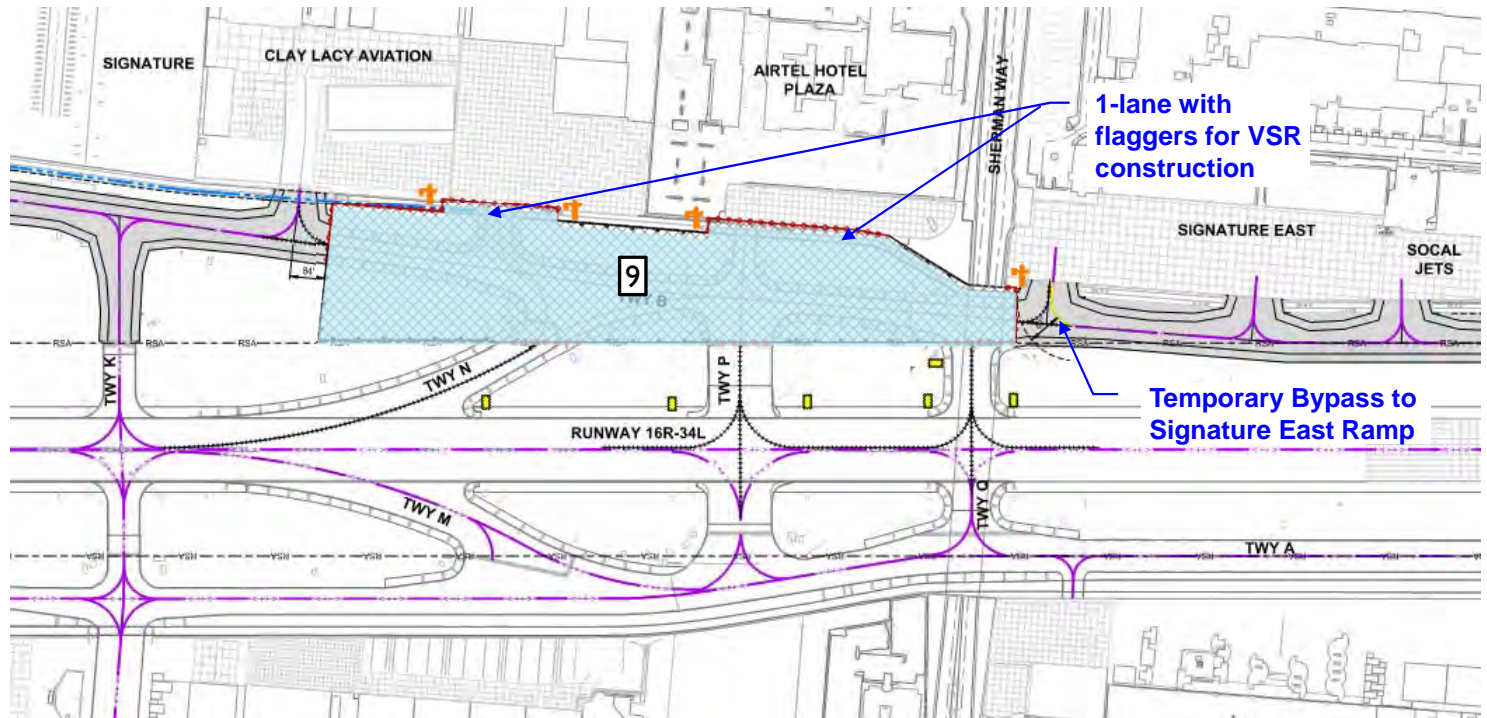


WORK AREA 8A & 8B

Work Area 9

- Mid November through Late January
 - 70 Days (10 Weeks)
- Taxiway B closed from Clay Lacy Entrance to Taxiway Q





- **Unrestricted Daytime Work Area**
(Minimum 8-Hour Shift, 5 Days/Week)
- **Accelerated Work Area**
(Minimum 10-Hour Shift, 6 Days/Week)
- **Nighttime Work Area**
(2200-0600)
- **Already Constructed Work Area**

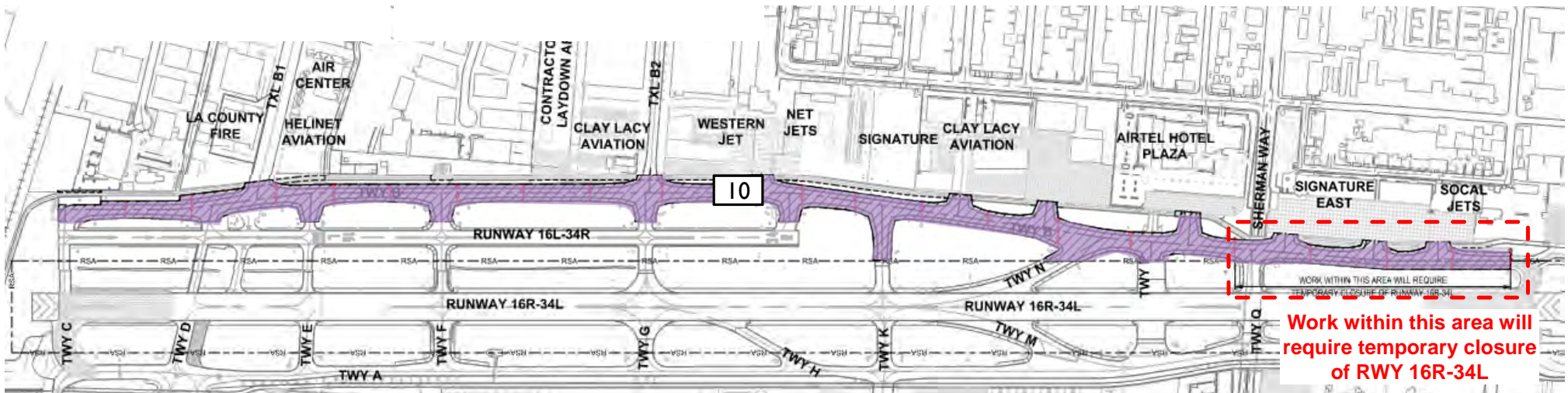


WORK AREA 8

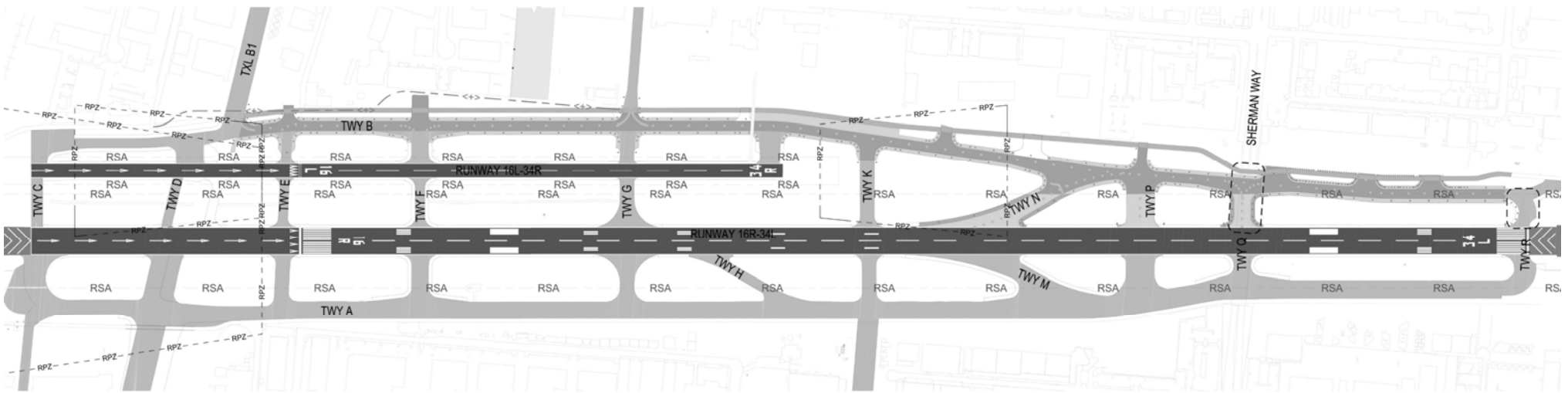
Work Area 10

- Late February through Mid March
- 56 Days (8 Weeks)
- Temporary Nightly Closure of Runway 16R

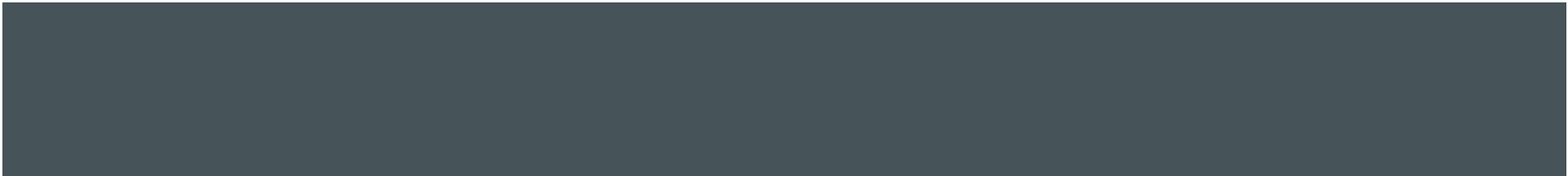
-  **Unrestricted Daytime Work Area**
(Minimum 8-Hour Shift, 5 Days/Week)
-  **Accelerated Work Area**
(Minimum 10-Hour Shift, 6 Days/Week)
-  **Nighttime Work Area**
(2200-0600)
-  **Already Constructed Work Area**



WORK AREA 10



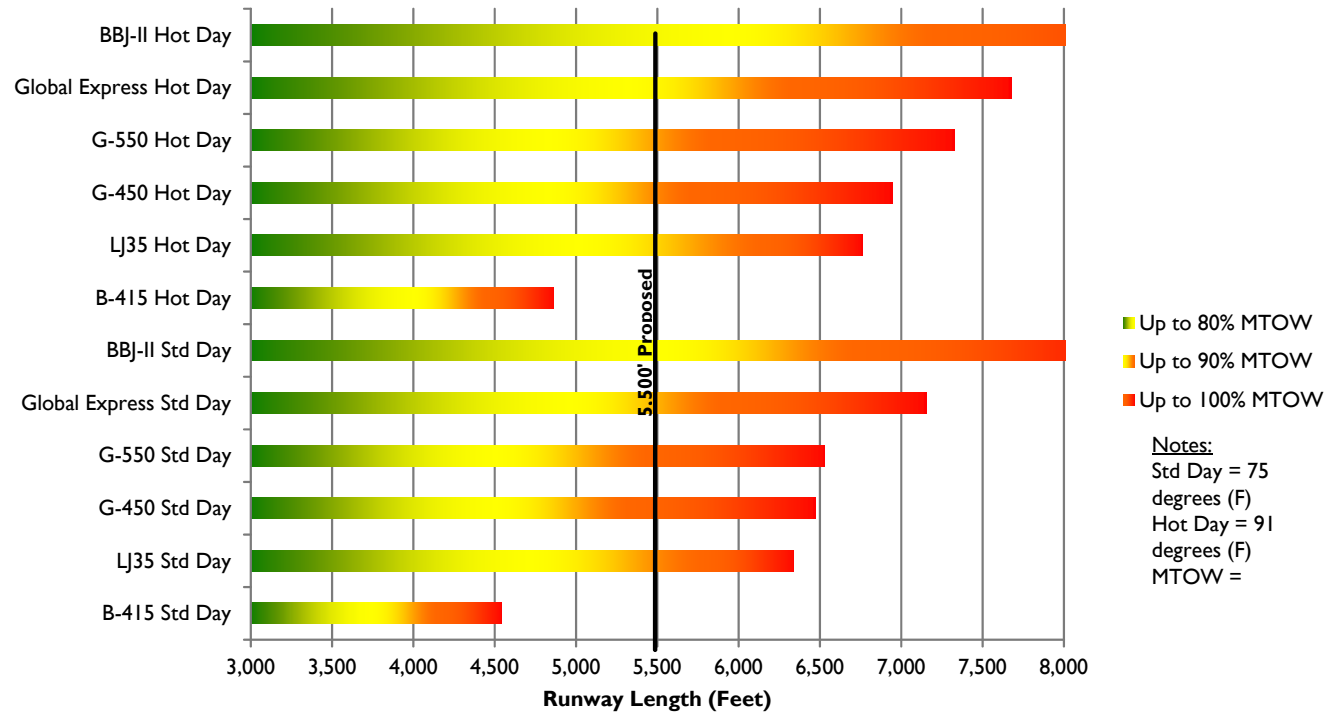
Q & A



RUNWAY SHORTENING DURING THE COOL MONTHS

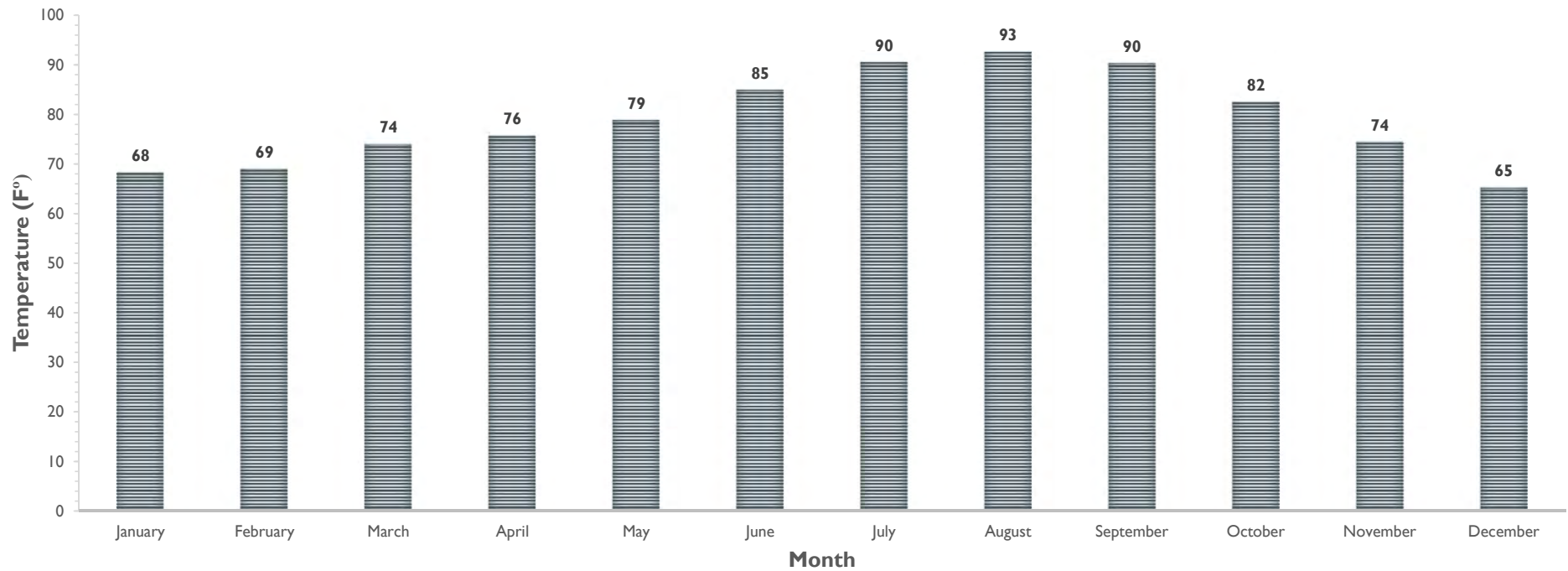
- Operating in the cooler months improves runway performance
- ~85 - 95% MTOW for large aircraft

Runway Departure Length Requirements



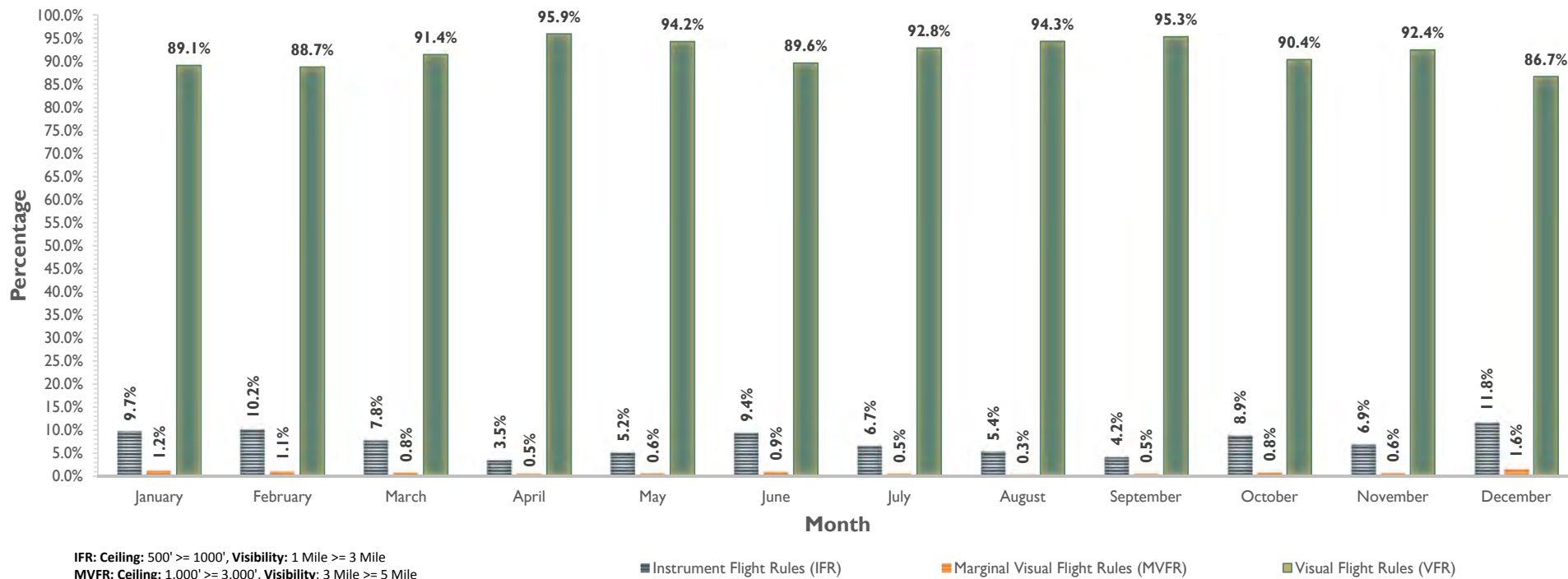
MONTHLY AVERAGE HIGH TEMPERATURES

AVERAGE MONTHLY HIGH TEMPERATURES (2007-2017)



MONTHLY SKY CONDITIONS

AVERAGE MONTHLY VISIBILITY/ CEILING CONDITIONS DISTRIBUTION (2007-2017)



MONTHLY RAINFALL TOTALS

AVERAGE MONTHLY RAINFALL TOTALS (2007-2017)

