

*Van Nuys Airport
Taxiways D, E, F, and Q
Reconstruction Project*

December 3, 2024

Agenda

1

Project Overview

2

Overall Access and Haul Routes

3

Construction Schedule and Primary Impacts

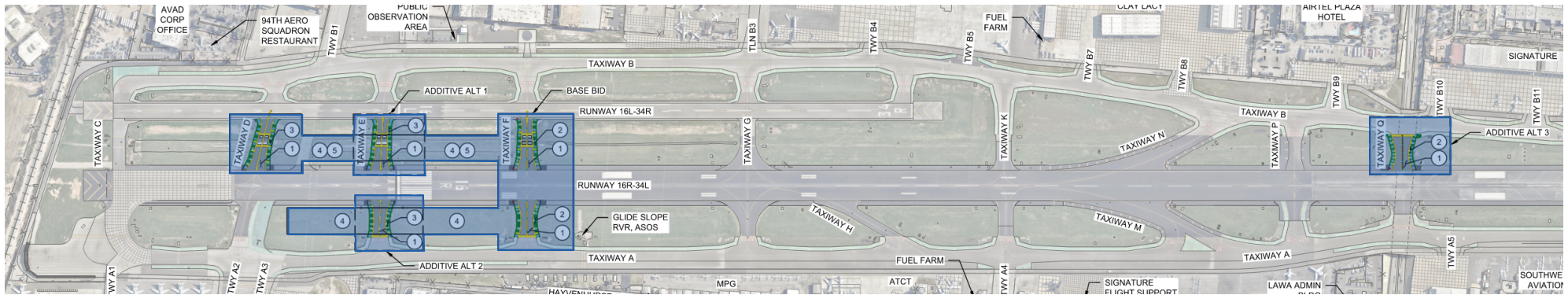
4

Construction Phasing and Detailed Impacts

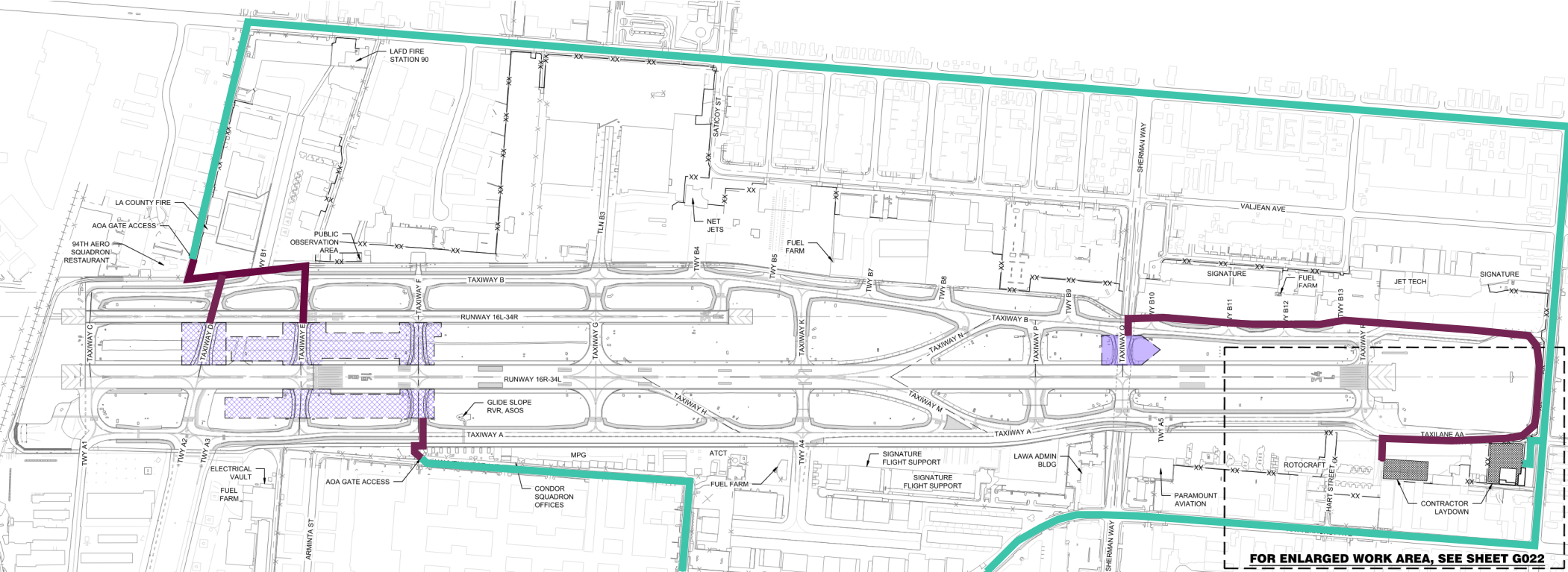
Project Overview

Reconstruct segments of six connector taxiways: Twy D, Twy E, Twy F, and Twy Q

- Asphalt pavement reconstruction
- Grading
- Drainage improvements
- Airfield electrical improvements
- Airfield lighting & signage
- Pavement markings



Overall Access and Haul Routes



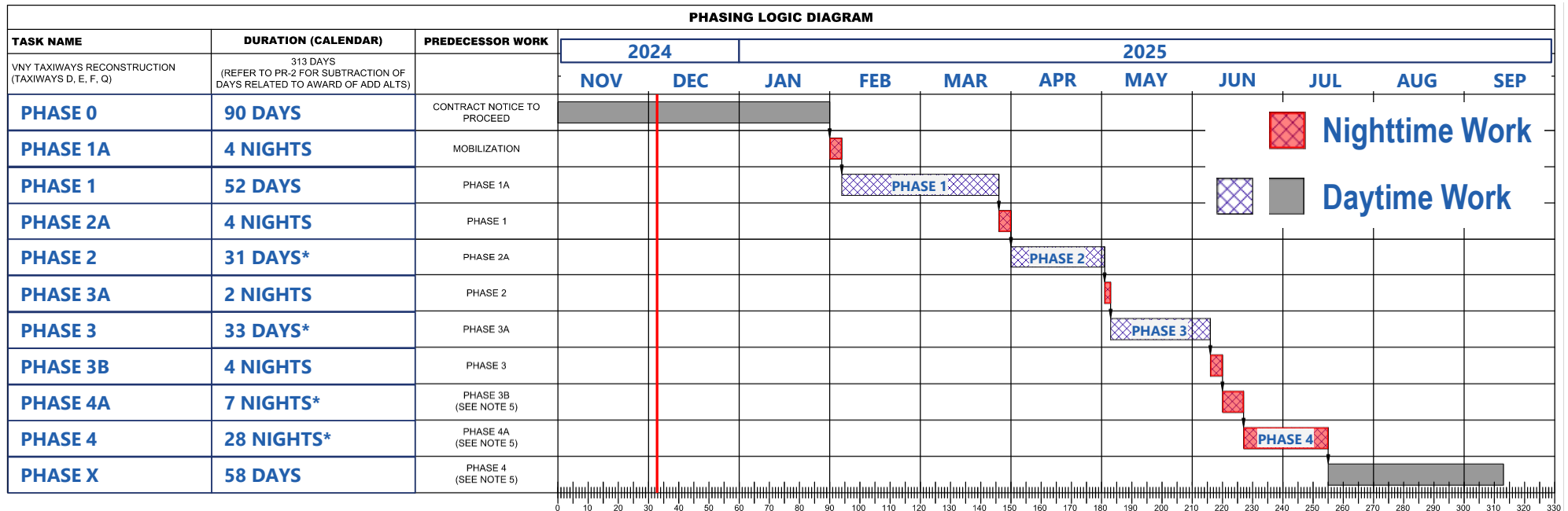
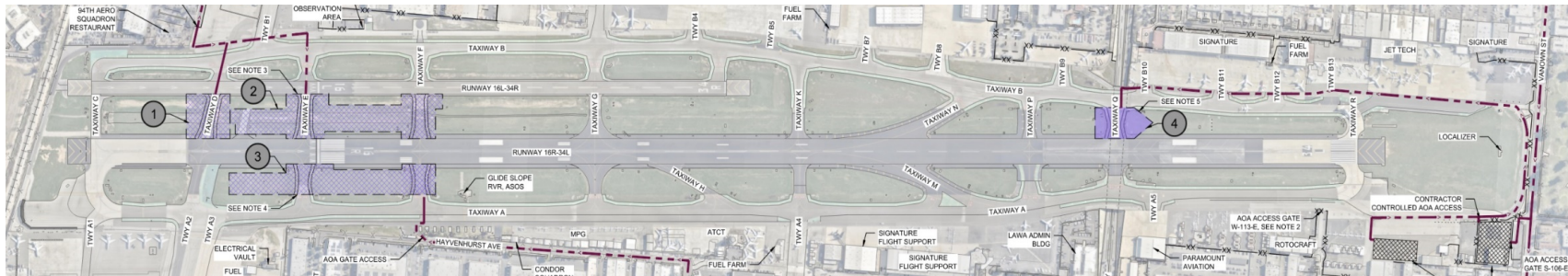
FOR ENLARGED WORK AREA, SEE SHEET G022

- AIRSIDE CONTRACTOR HAUL ROUTE
- LANDSIDE CONTRACTOR HAUL ROUTE

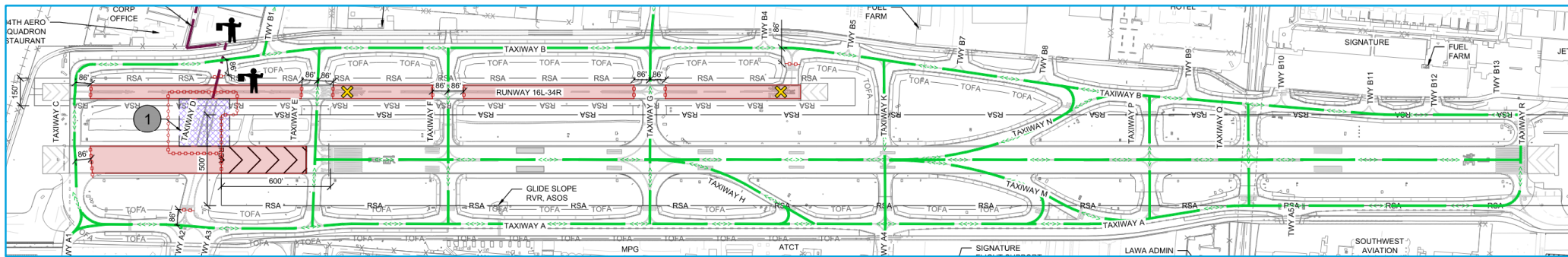
Construction Schedule and Primary Impacts

Tasks / Operational Impacts	Date(s)	Duration
Mobilization NTP	November 4, 2024	~3 months
Construction		
Runway 16L-34R closed	~February 2025 thru April 2025	~3 months
Runway 16R-34L Shortened at TXY E <ul style="list-style-type: none"> • ILS offline • Reduced declared distances 	~February 2025 thru March 2025	~2 months
Runway 16R-34L Shortened at TXY F <ul style="list-style-type: none"> • ILS offline • PAPI replaced by temporary PLASI • Reduced declared distances • 16R threshold displaced 	~April 2025 thru mid-June 2025	~2.5 months
Runway 16R-34L nightly closure with daily reopening	~mid-June 2025 thru mid-July 2025	~1 month

Phasing (Total Duration = 313 Calendar Days / 165 days = Field Construction)



Phase 1 – Taxiway D Reconstruction (Including Pavement Test Sections) 52 Calendar Days, February thru March



Runway 16R-34L Declared Distances

	RWY 16R		RWY 34L	
	Existing	Proposed	Existing	Proposed
TODA				
TORA	8,001'	6,701'	8,001'	6,327'
ASDA				
LDA	6,570'	6,568'	7,261'	6,168'

Construction Phase Notes

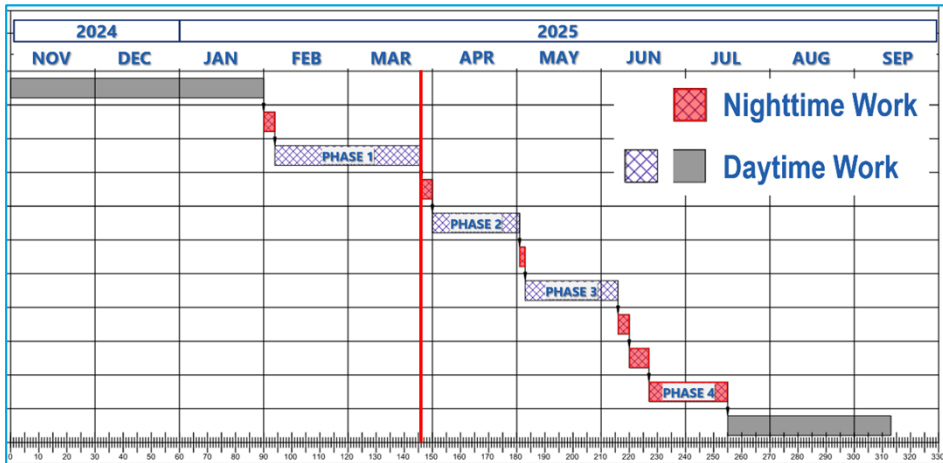
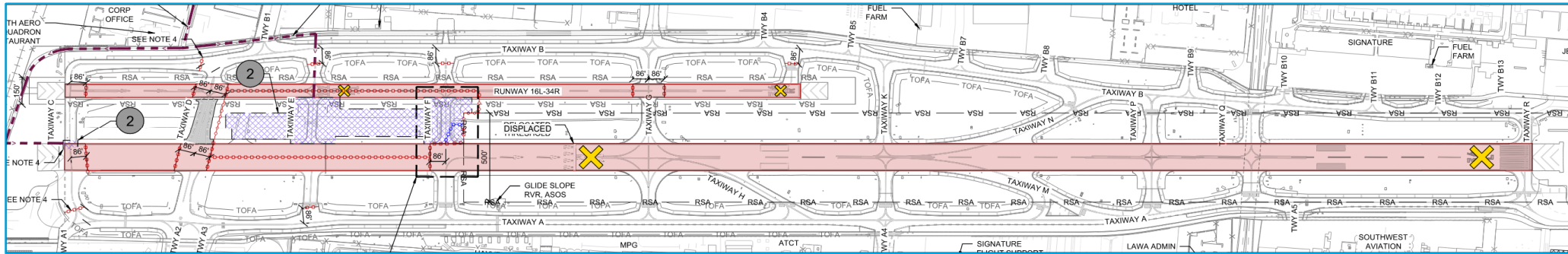
Construction

1. Work Hours: Daytime, Minimum 10-hr shifts.
2. Work Days: Monday thru Saturday
3. Duration: 52 calendar days.
4. Other Criteria: Test section completed within 25 calendar days

Airfield Operations

1. Runway 16L-34R – Closed
2. Runway 16R-34L – Shortened, 16R ILS Not Available
3. Taxiway D – Closed

Phase 2A – Phase 2 Pre-Work – Runway 16R Threshold Displacement 4 Calendar Nights in Late-March



Construction Phase Notes

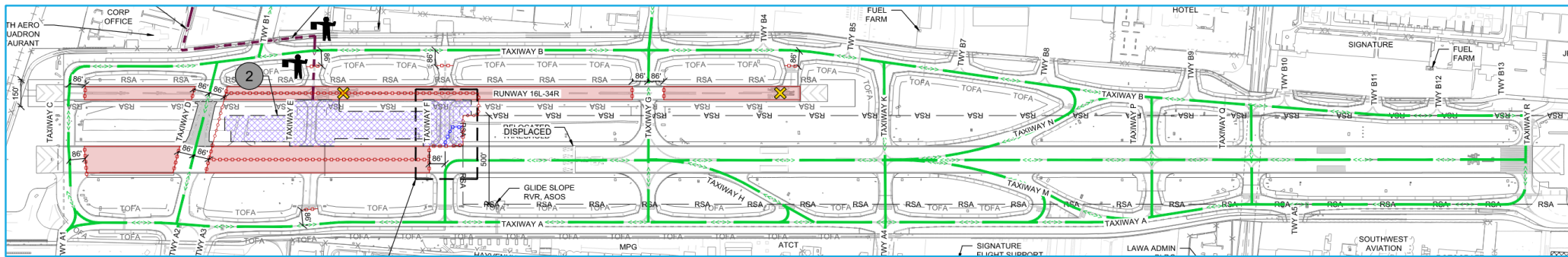
Construction

1. Work Hours: Nighttime 2230 to 0600.
2. Work Days: Sunday to Thursday.
3. Duration: 4 consecutive calendar nights.
4. Other Criteria:
 - a. Runway 16R-34L shall reopen by 0600 at the end of each of the first three nights.
 - b. Runway 16R threshold displacement shall take effect over the final night of the phase.

Airfield Operations

1. Runway 16L-34R and 16R-34L – Closed
2. Various Taxiways on north end – Closed

Phase 2 – Taxiway E (east) and F (east) Reconstruction 31 Calendar Days in April



Runway 16R-34L Declared Distances

	RWY 16R		RWY 34L	
	Existing	Proposed	Existing	Proposed
TODA			8,001'	5,000'
TORA	8,001'	5,824'	8,001'	5,000'
ASDA			7,261'	4,824'
LDA	6,570'	5,224'		

Construction Phase Notes

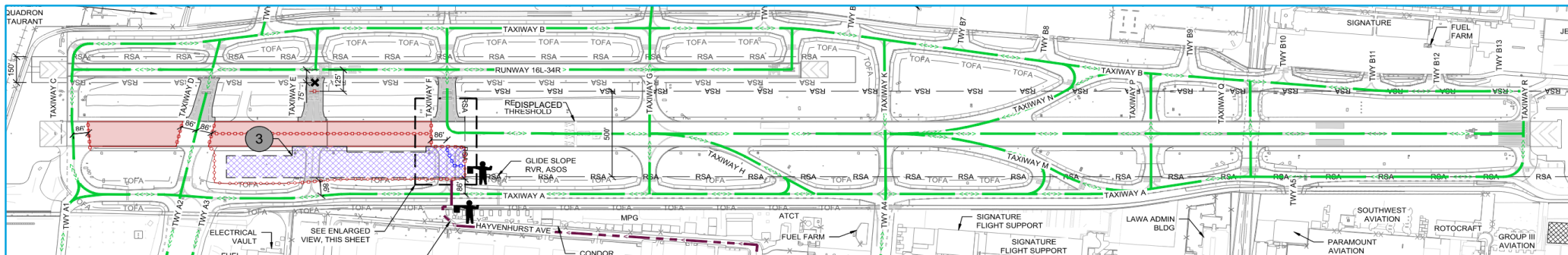
Construction

1. Work Hours: Daytime, Minimum 10-hr shifts.
2. Work Days: Monday thru Saturday.
3. Duration: 31 Calendar Days

Airfield Operations

1. Runway 16L-34R – Closed
2. Runway 16R-34L – Threshold Displaced, Shortened
 - a. 16R ILS Not Available
 - b. 16R PAPI Not Available, Temporary PLASI Available
 - c. RWY 34L Visual Departure Only

Phase 3 – Taxiway E (west) and F (west) Reconstruction 33 Calendar Days in May/June



Runway 16R-34L Declared Distances

	RWY 16R		RWY 34L	
	Existing	Proposed	Existing	Proposed
TODA				
TORA	8,001'	5,824'	8,001'	5,000'
ASDA				
LDA	6,570'	5,224'	7,261'	4,824'

Construction Phase Notes

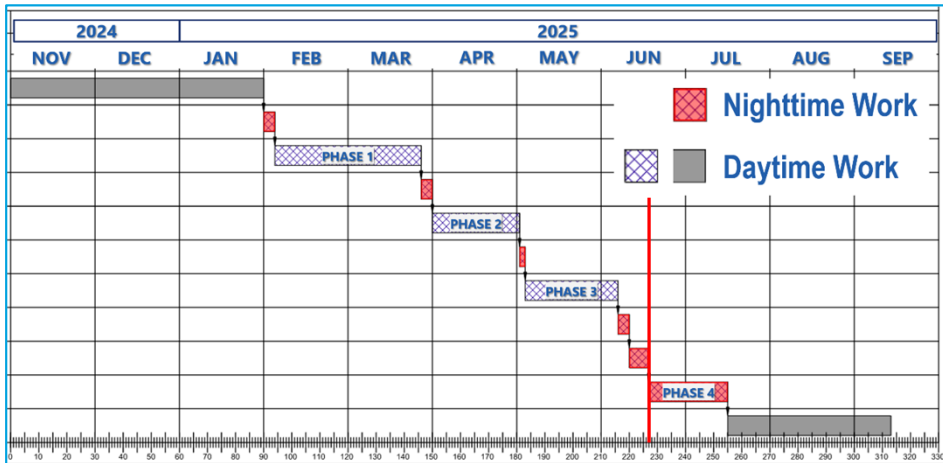
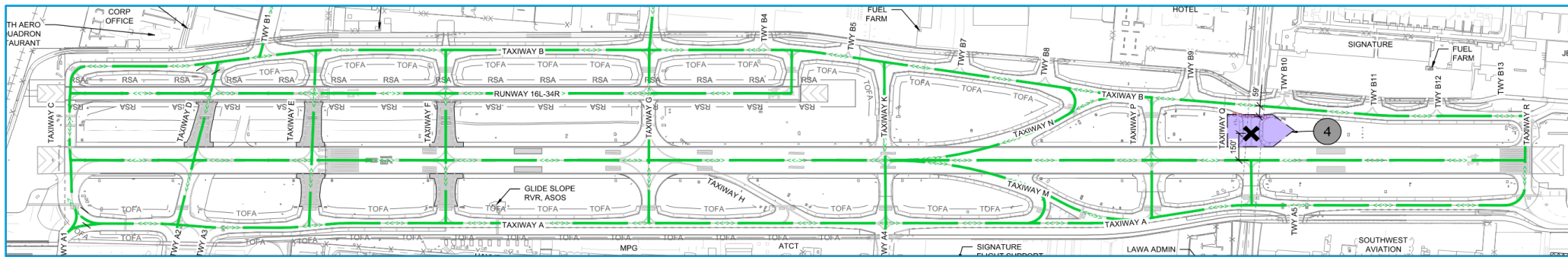
Construction

1. Work Hours: Daytime, Minimum 10-hr shifts.
2. Work Days: Monday thru Saturday.
3. Duration: 33 Calendar Days

Airfield Operations

1. Runway 16R-34L – Threshold Displaced, Partially Closed
 - a. 16R ILS Not Available
 - b. 16R PAPI Not Available, Temporary PLASI Available
 - c. RWY 34L Visual Departure Only

Phase 4 (day configuration) – Taxiway Q (east) Reconstruction 28 Calendar Nights in June/July



Construction Phase Notes

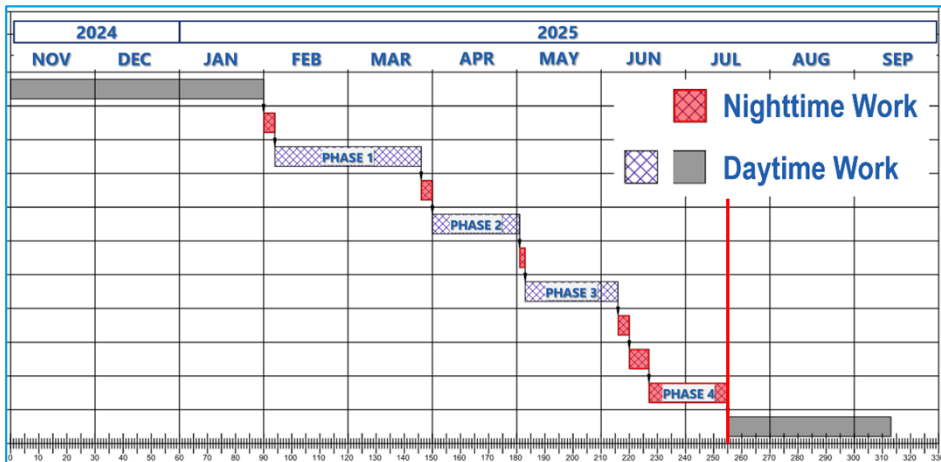
- Construction**
1. Work Hours: Nighttime, 2230 to 0600
 2. Work Days: Sunday to Sunday
 3. Duration: 28 calendar nights
 4. Other Criteria:
 - a. Runway 16R-34L shall reopen by 0600 at the end of each night

- Airfield Operations**
1. Taxiway Q (east) – Closed

Phase X – Demobilization

58 Calendar Days in July/August/September

- Final pavement marking on TWY Q
- Reference PR-2
- Submission and approval of all record documents
- Resolution of all Notice of Non-Compliance and Job Memos
- Completion of Punchlist work
- Close out all permits
- Demobilization and restoration of Staging area to pre-project condition
- Complete all remaining work pursuant to the Contract Documents



Construction Phase Notes

Construction

1. Work Hours: Daytime - Minimum 8-hr shift
2. Work Days - Monday thru Friday
3. Duration: 58 calendar days

Airfield Operations

1. Taxiway Q (east) – Some Night Closures