



TAXIWAY A & B REHABILITATION

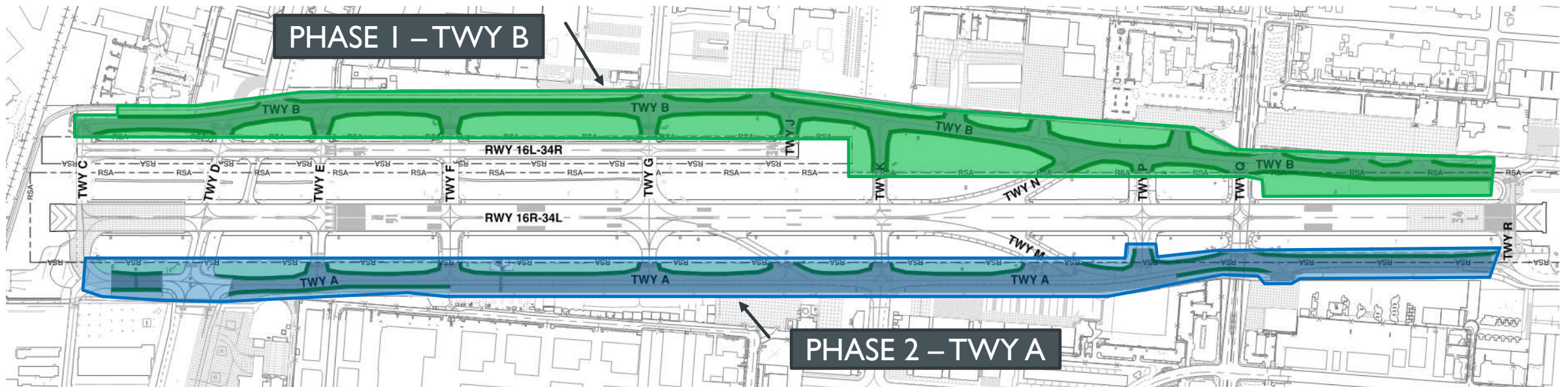
VAN NUYS AIRPORT – LOS ANGELES WORLD AIRPORTS

Ali Aoude, P.E.

Civil Engineer, HNTB

- FOR DISCUSSION PURPOSES ONLY, NOT FOR DISTRIBUTION -

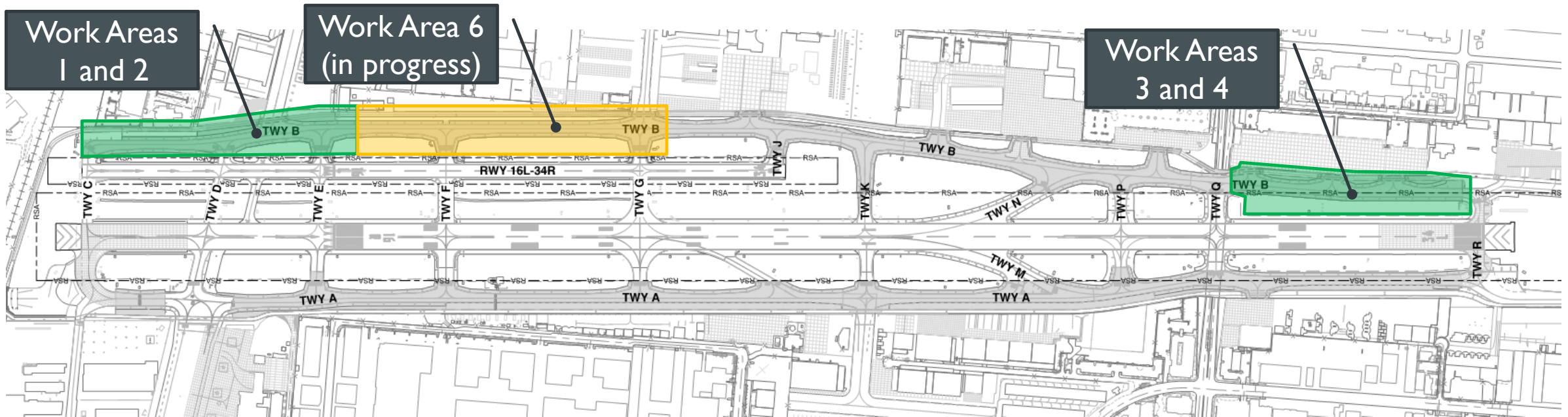
PROJECT SCOPE



- Project Limits: Taxiway A and B from Taxiway C to Taxiway R
- FAA ADG III Taxiway Geometry
- Full Depth Taxiway Pavement Reconstruction, 20 Year Design Life
- Infield Grading and Drainage Improvements
- LED Centerline and Edge Lights
- Airfield Signage Upgrades
- Airfield Surface Marking

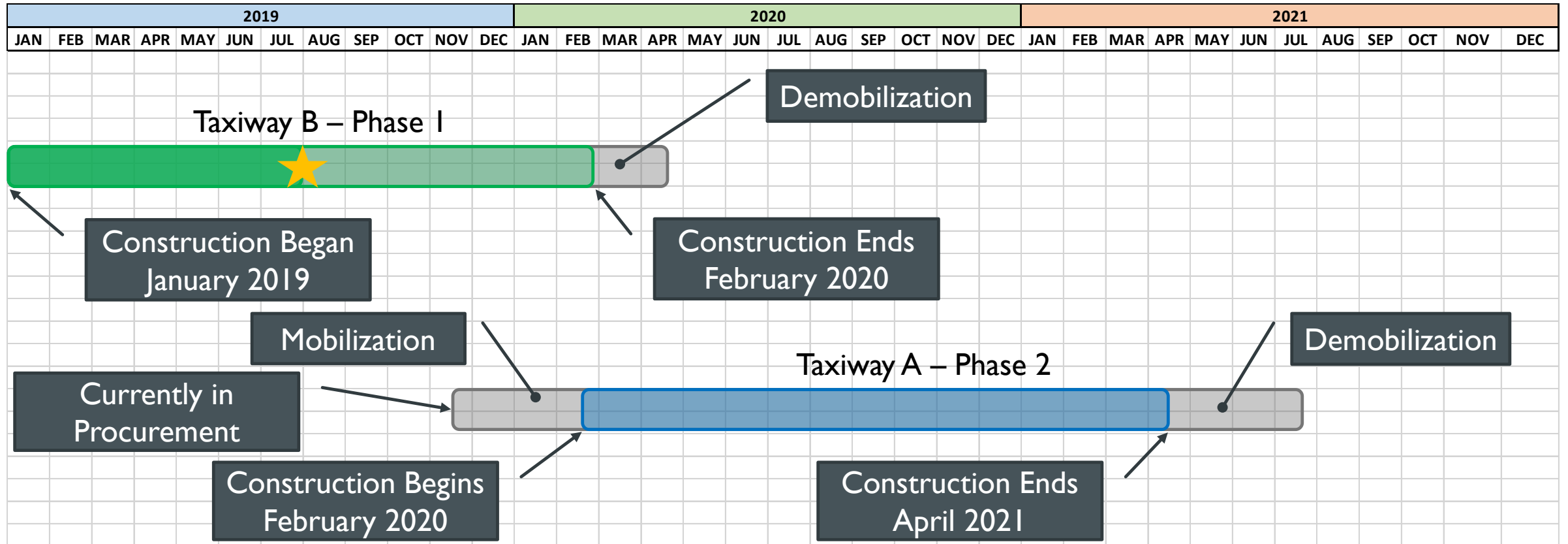
- FOR DISCUSSION PURPOSES ONLY, NOT FOR DISTRIBUTION -

PROJECT STATUS

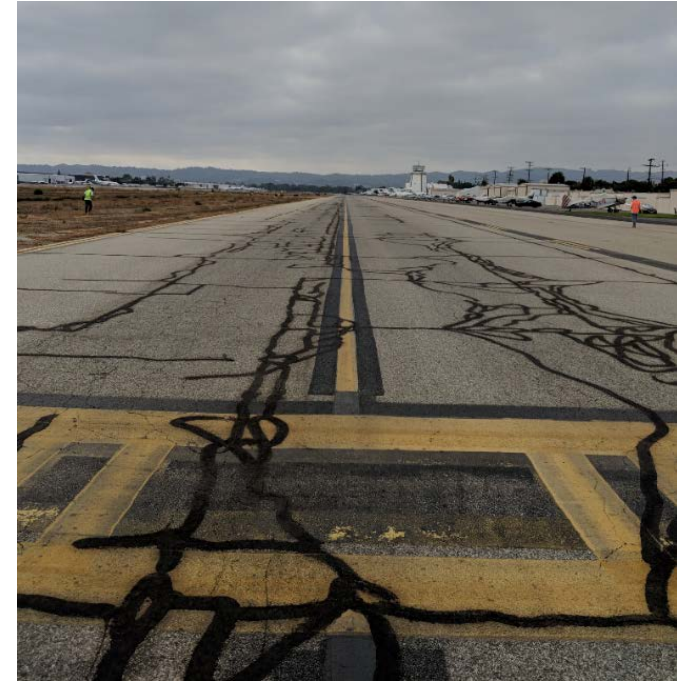


- FOR DISCUSSION PURPOSES ONLY, NOT FOR DISTRIBUTION -

SCHEDULE

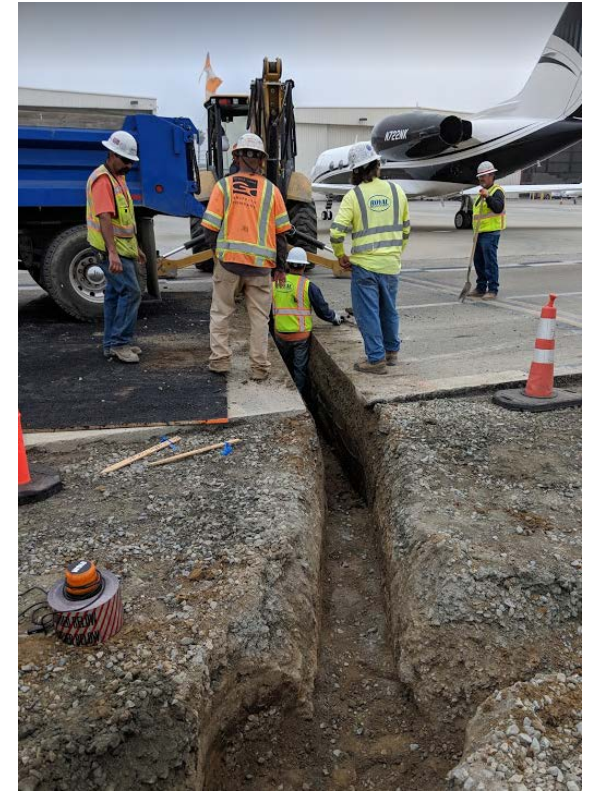
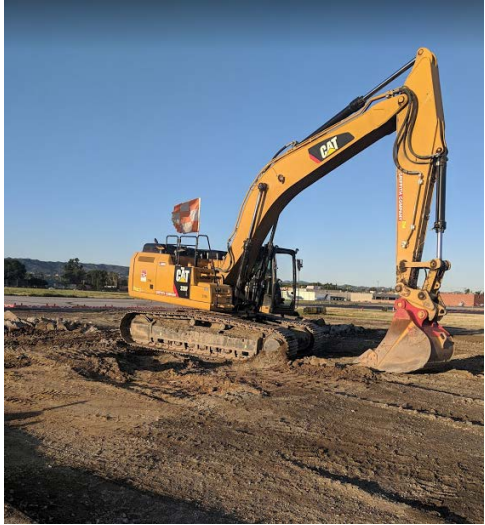


EXISTING CONDITIONS



- FOR DISCUSSION PURPOSES ONLY, NOT FOR DISTRIBUTION -

DURING CONSTRUCTION

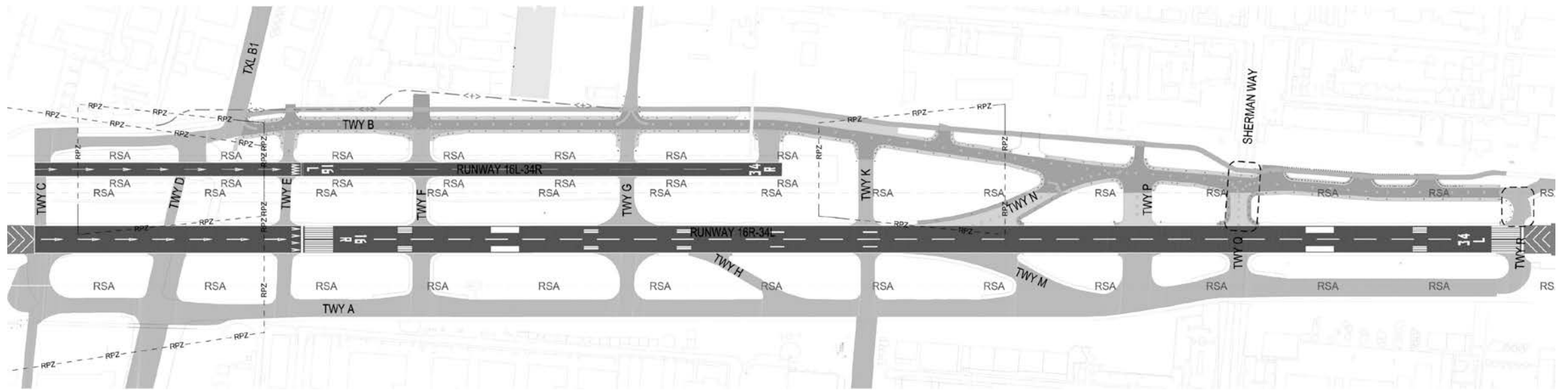


- FOR DISCUSSION PURPOSES ONLY, NOT FOR DISTRIBUTION -

COMPLETED



- FOR DISCUSSION PURPOSES ONLY, NOT FOR DISTRIBUTION -



Q & A

- FOR DISCUSSION PURPOSES ONLY, NOT FOR DISTRIBUTION -